

JRC ECDiS JAN-9201, JAN-7201
JRC ECDiS Type Specific Training

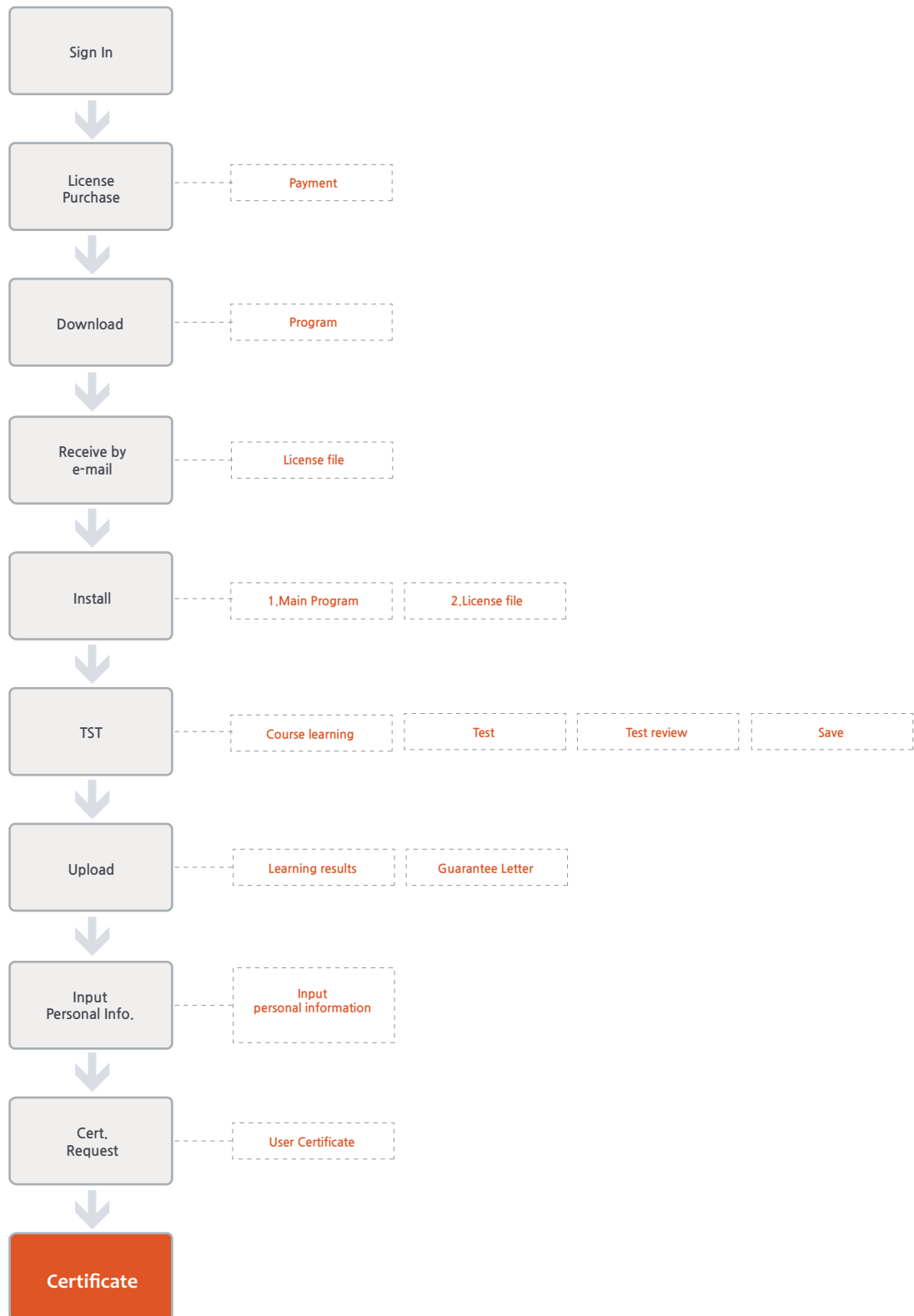
Program Manual_(offline)

English

CONTENTS

1. Installation	3
1.1. Installation	4
2. Execution	6
2.1. Keyfile registration	7
3. Screen and menu	10
3.1. Screen configuration	11
3.2. Program menu description	12
3.3. Course menu description	17
3.4. Operation panel description	24
4. Learning	26
4.1. Learning overview	27
4.2. Learning course	28
4.3. Exercise course - Step by step	31
4.4. Exercise course - Practice by oneself	36
4.5. Penalty of Practice by oneself	38
5. Test	40
5.1. Test overview	41
5.2. Start the Test	42
5.3. Test result	47
6. Test Review	49
6.1. Test review	50
7. Save the result file	52
7.1. Save the test result file	53
8. Tips	54
8.1. Description of Online mode and Offline mode	55
8.2. About the Key File	56
8.3. Program update	57
8.4. Learning records synchronization	58
8.5. Explanation of Terms	59

PROCESS



1. Installation

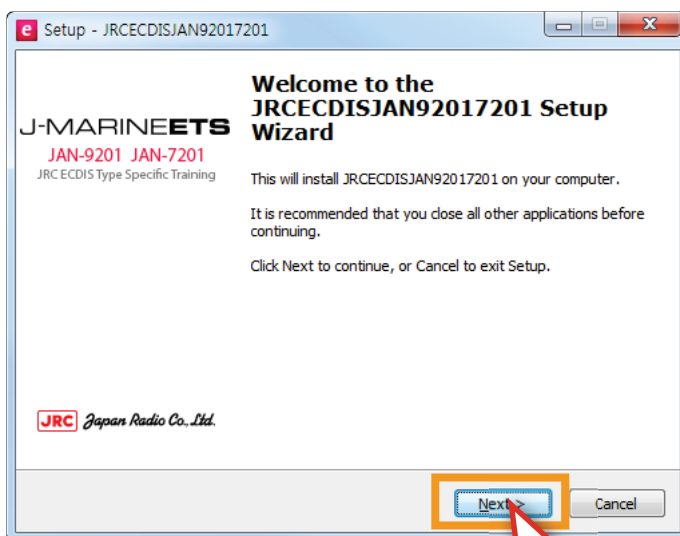
1. Installation

1. Installation

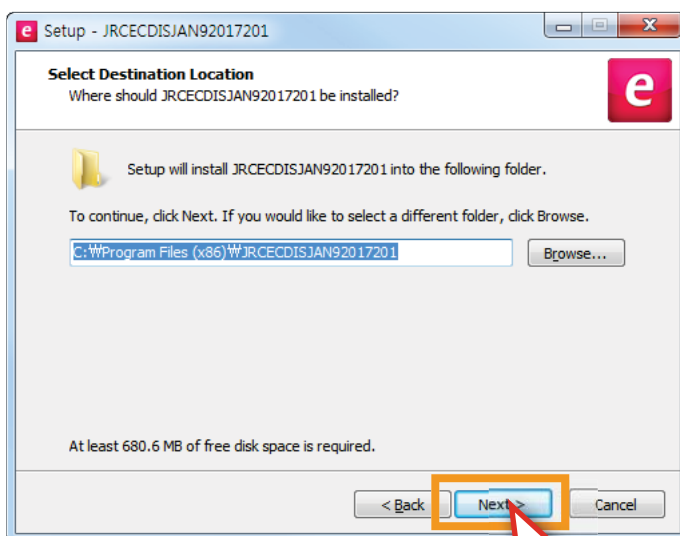
1. Installation



<Figure 1-1>



<Figure 1-2>



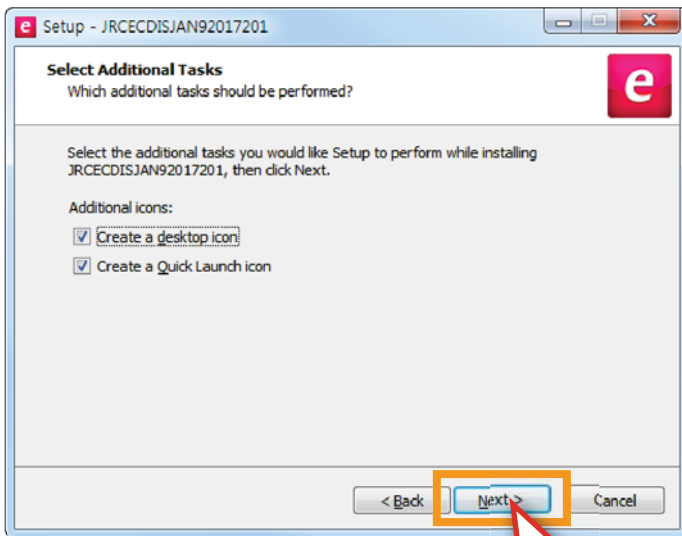
<Figure 1-3>

- 1) 'JRCECDISJAN92017201 Setup.exe'
Double-click the file to install the program.
<Figure 1-1>

- 2) The window will pop up, shown as <Figure 1-2>.
Click the <Next> button.

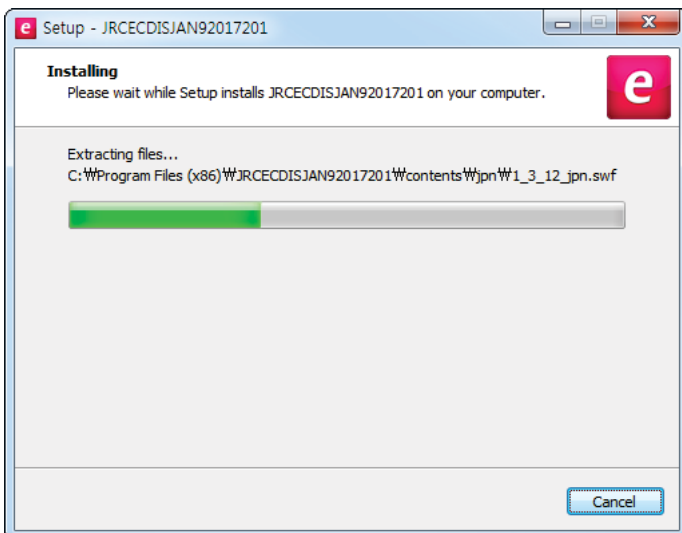
- 3) Click the <Next> button.
<Figure 1-3>

1. Installation



<Figure 1-4>

- 4) Check 'Create a desktop icon' and 'Create a Quick Launch icon', then click the <Next> button.
<Figure 1-4>



<Figure 1-5>

- 5) Installation is now in progress.
<Figure 1-5>



<Figure 1-6>

- 6) 'JRC ECDIS JAN-9201, JAN-7201' Installation is completed. Click the <Finish> button.
<Figure 1-6>

2. Execution

1. Keyfile registration

2. Execution

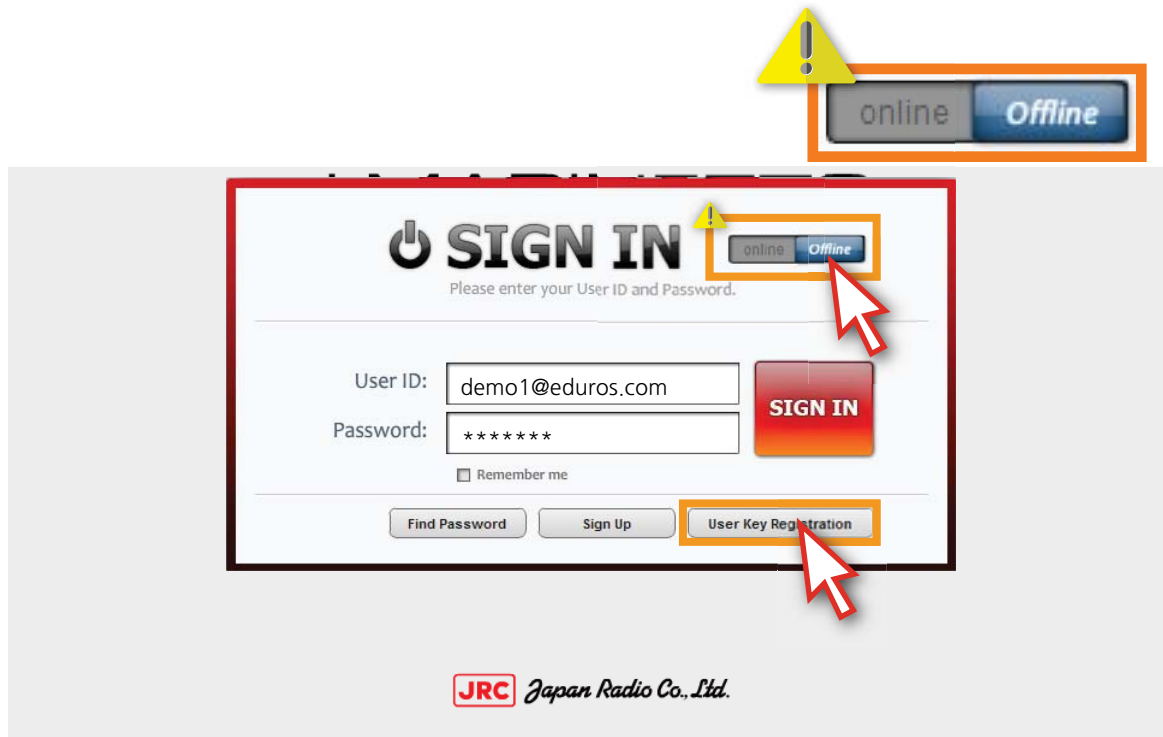
1. Keyfile registration

1) To run the program, click the 'JRC ECDIS icon'. <Figure 2-1>



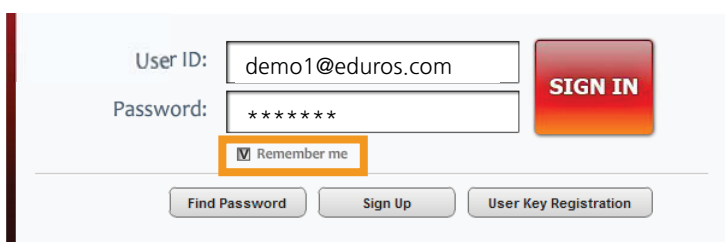
<Figure 2-1>

2) Choose 'Offline' when the 'SIGN IN' window pops up, then click 'User Key Registration' button. As shown below <Figure 2-2>



<Figure 2-2>

Auto Login

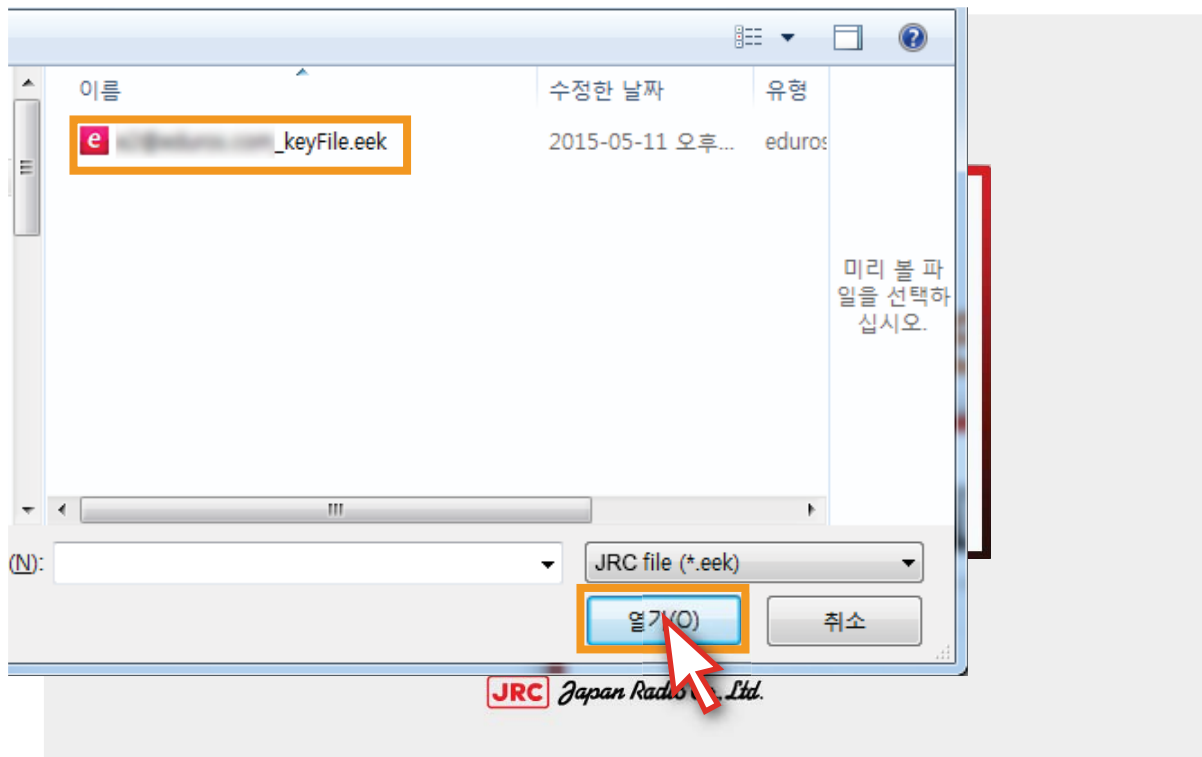
A screenshot of the 'Auto Login' form. It shows the 'SIGN IN' window with the 'Remember me' checkbox checked. The 'User ID' field contains 'demo1@eduros.com' and the 'Password' field contains '*****'. The 'SIGN IN' button is highlighted. Below the password field, the 'Remember me' checkbox is checked and highlighted with an orange box. The 'Find Password', 'Sign Up', and 'User Key Registration' buttons are also visible at the bottom.

Sign in with checking 'Remember me', when you restart the program, user's ID and password will be shown on the popup SIGN IN window.

2. Execution

3) Choose the given 'User Key File', Click 'Open' button.. <Figure 2-3>

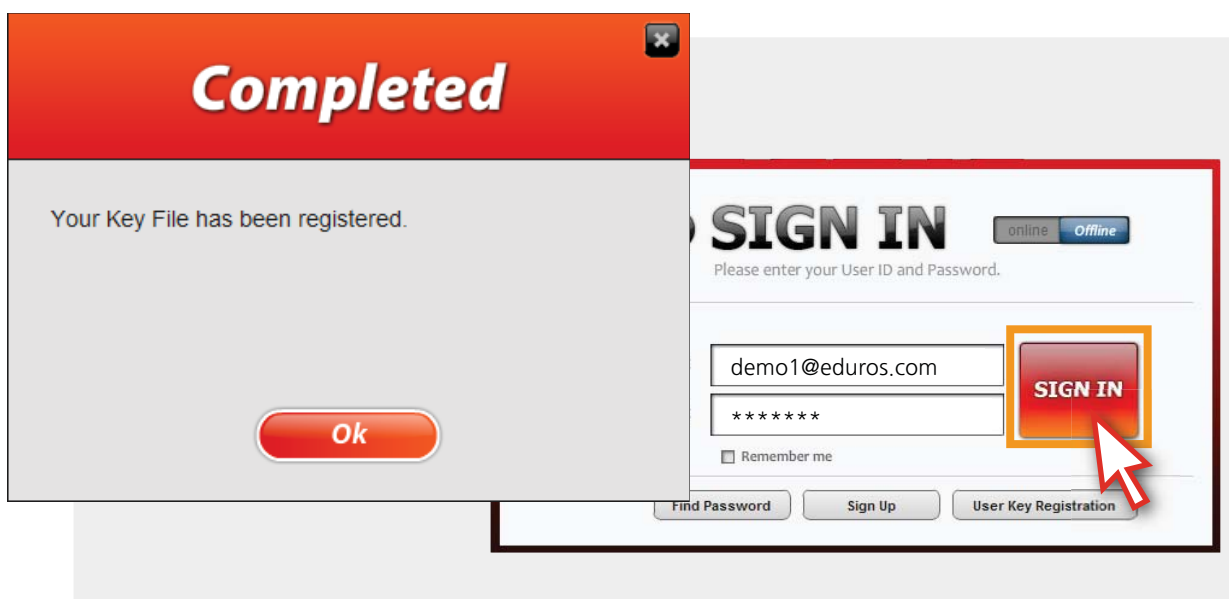
※ Refer to the 'User Key File' detailed instruction on the page 56.



<Figure 2-3>

4) Input user ID and password to login when you complete the registration of 'User Key File'.

<Figure 2-4>



<Figure 2-4>

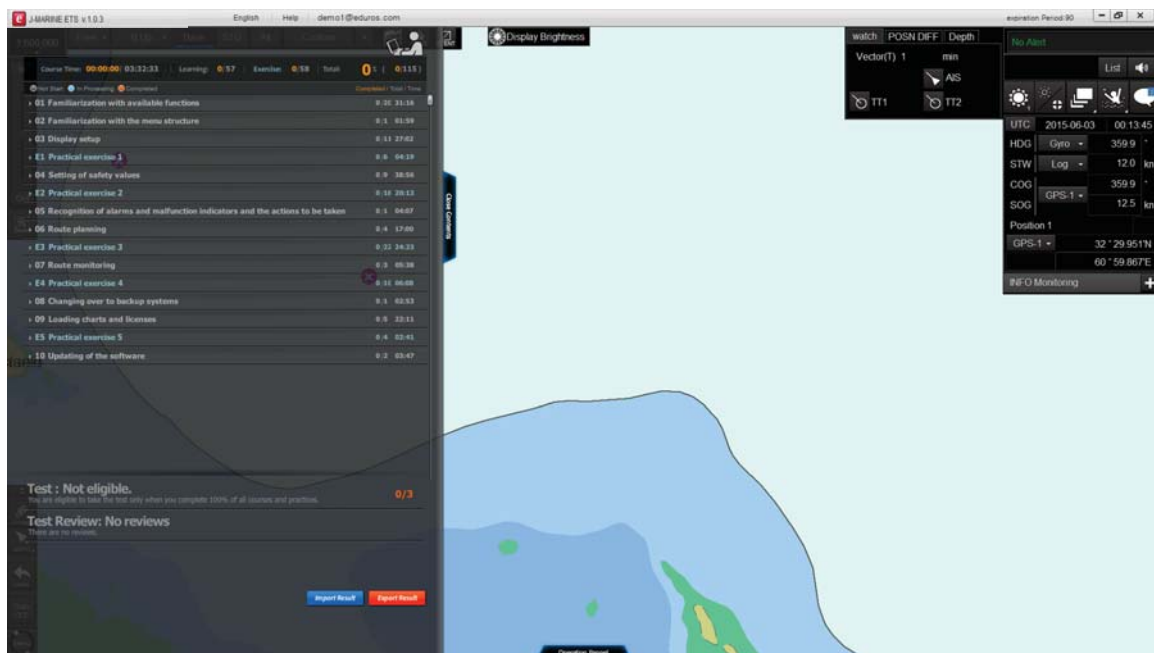
2. Execution

5) Select English. <Figure 2-5>



<Figure 2-5>

6) The main screen appears. <Figure 2-6>



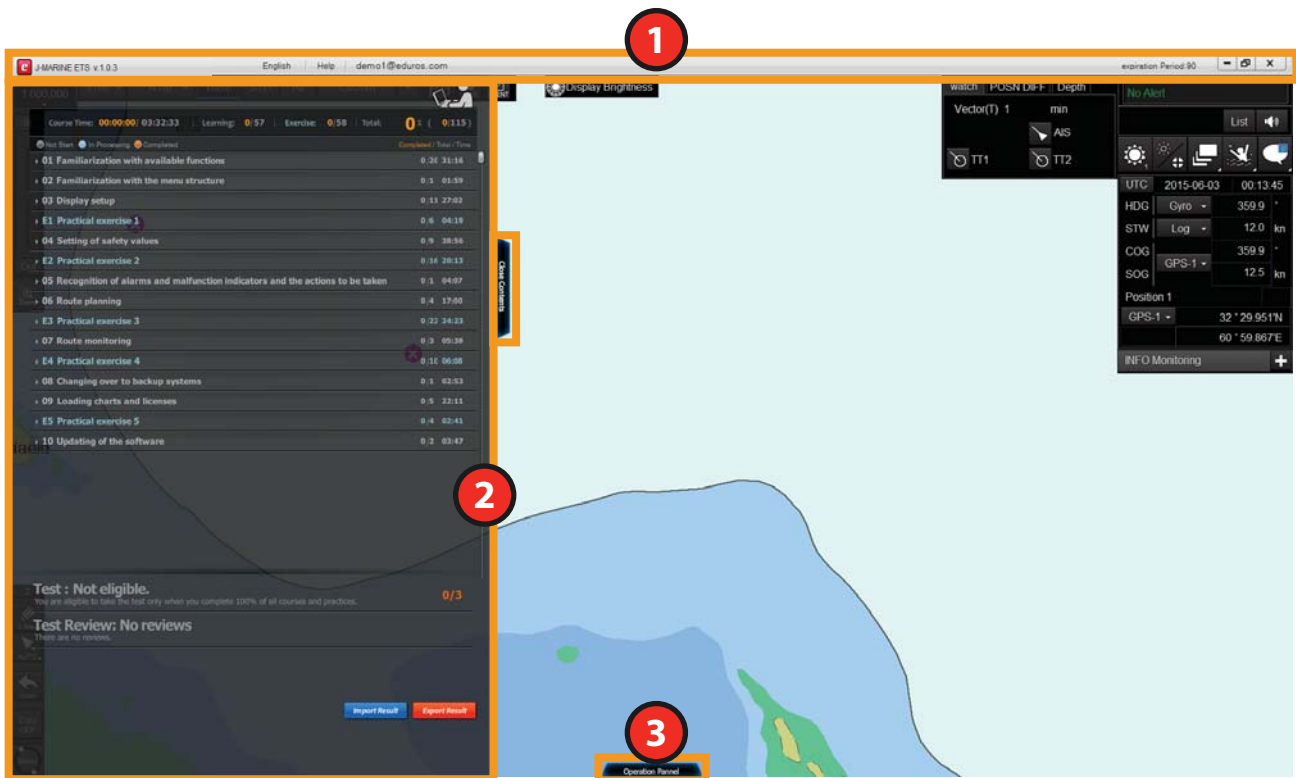
<Figure 2-6>

3. Screen and menu

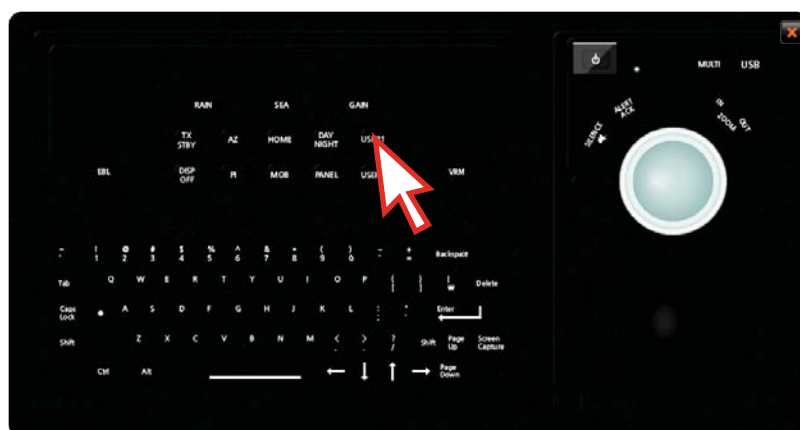
1. Screen configuration
2. Program menu description
3. Course menu description
4. Operation panel description

3. Screen and menu

1. Screen configuration

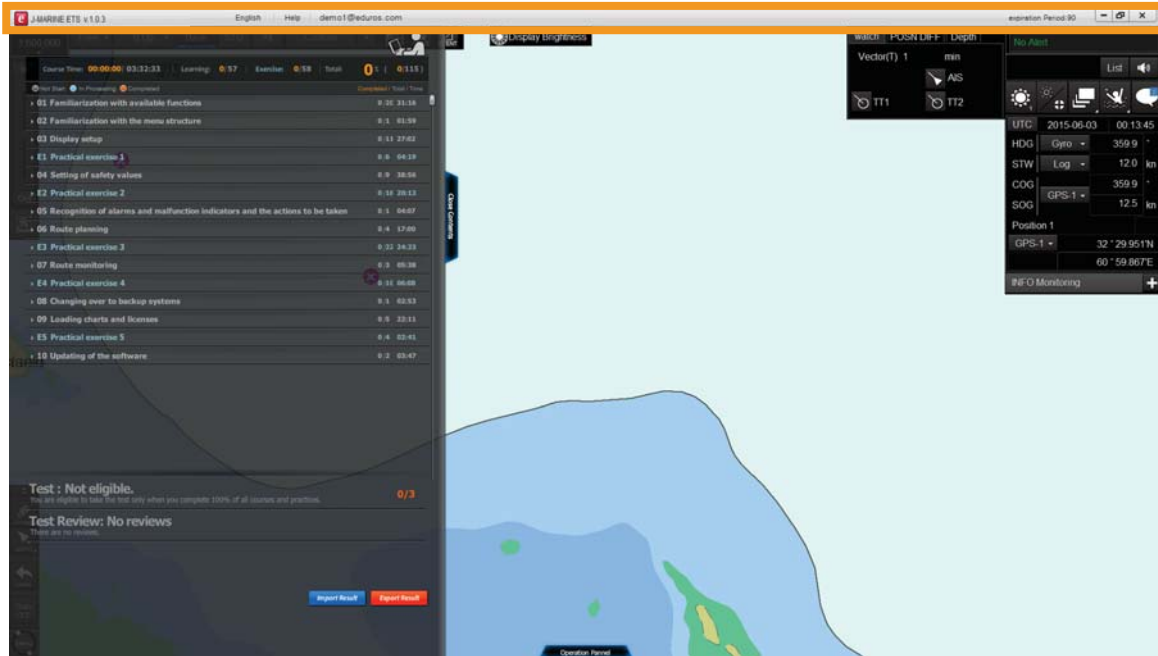


- 1 [Program Menu]**
It includes such functions as Language selection, Updates, Sync log, Sign Out, term of validity and Help etc.
- 2 [Course Menu]**
It includes entire courses and the test part of Program.
You can learn all the courses alone and take the test in the end.
- 3 [Operation panel Menu]**
It is a graphical menu which displays the names and functions of each part on the operation panel.

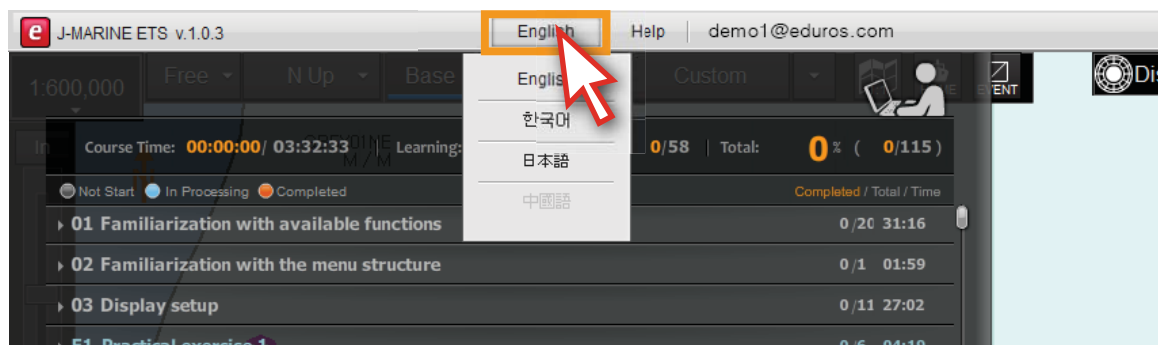


3. Screen and menu

2. Program menu description



1) You can select English only. <Figure 3-1>

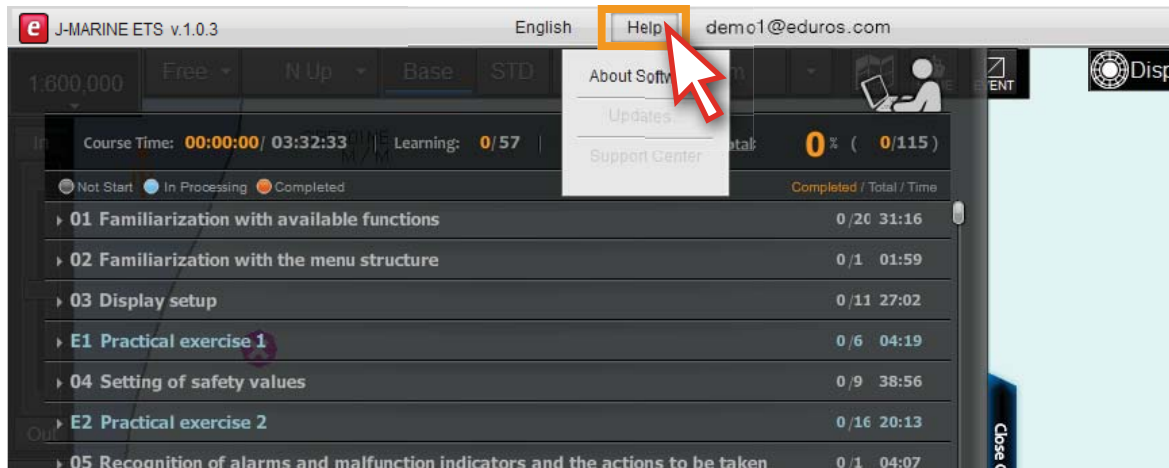


<Figure 3-1>

3. Screen and menu

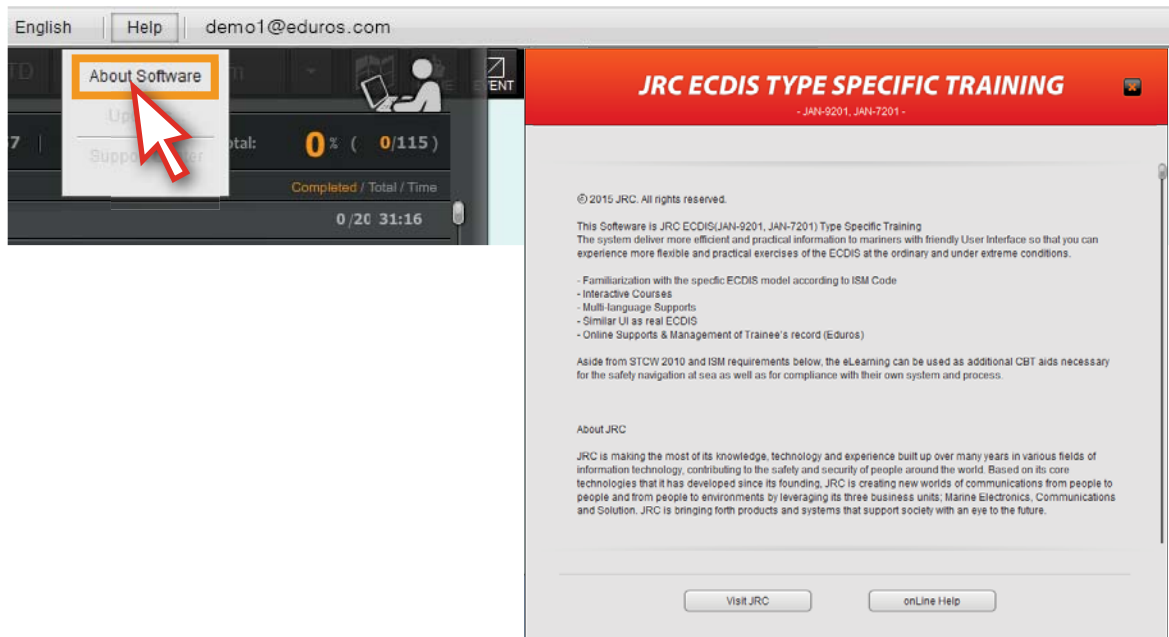
2) When you click the 'help' button, drop-down lists ('About eduros', 'Updates...'and 'Support Center' etc.) will appear. <Figure 3-2>

※ However, 'Updates...'and 'Support Center' can only be available in the online mode.



<Figure 3-2>

3) 'About Software' in the help tab, you can get some brief summary about the software and JRC. <Figure 3-3>

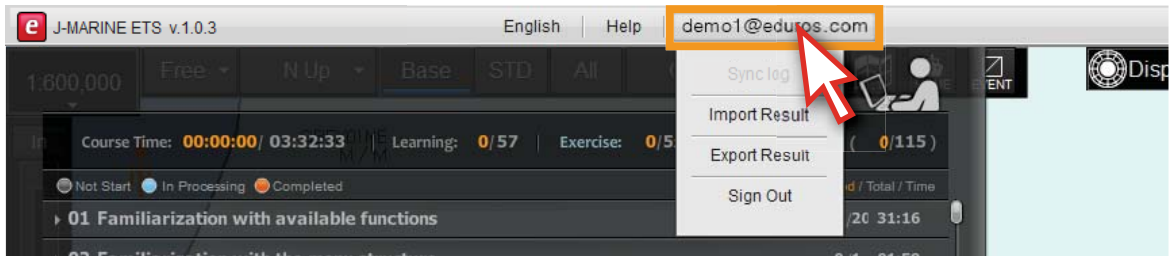


<Figure 3-3>

3. Screen and menu

4) When you click the user ID on the Main menu bar, 'Sync log' and 'Sign out' will appear in drop down list.

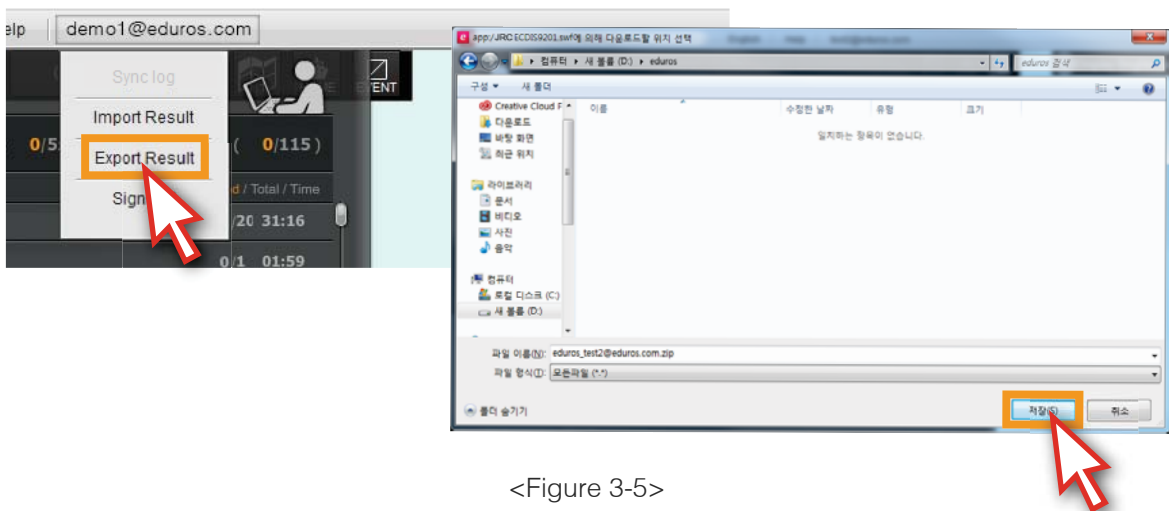
※ However, 'Sync log' can only be available in Online mode. <Figure 3-4>



<Figure 3-4>

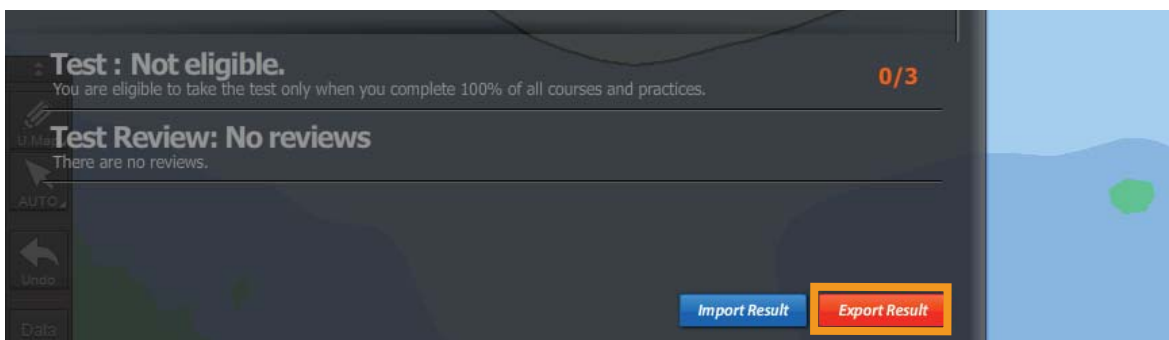
5) Click 'Export Result' button to save the user's learning records. You can use the saved file to synchronize your learning records to another PC or upload the file on the training website. <Figure 3-5>

※ Please refer to the detailed instruction on page 58.



<Figure 3-5>

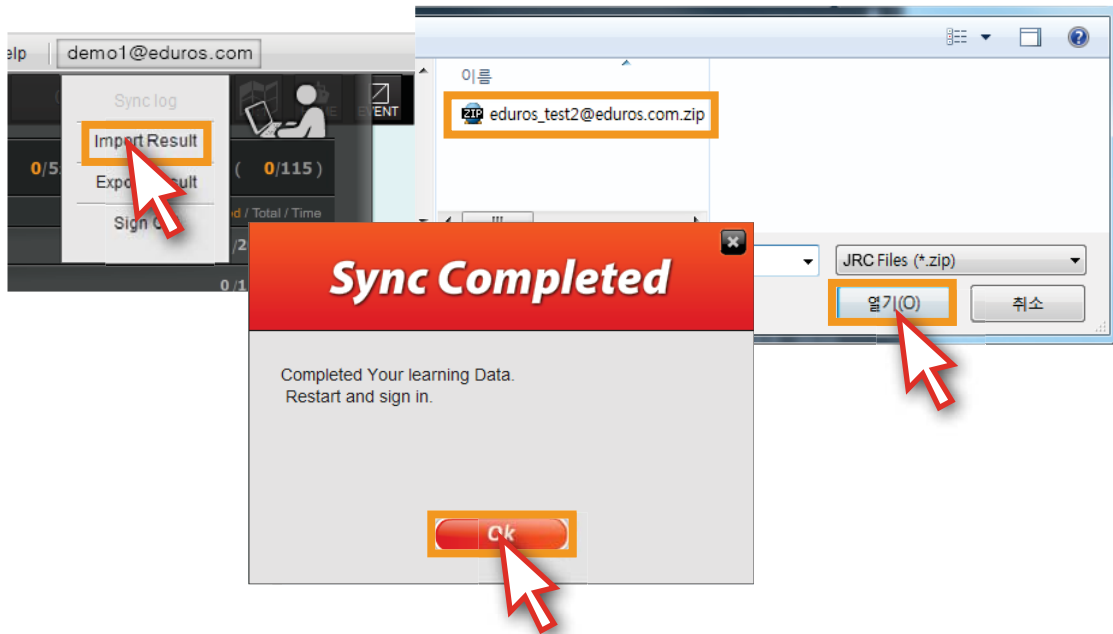
6) You can also use the 'Export Result' button on the lower right corner of the contents panel. <Figure 3-6>



<Figure 3-6>

3. Screen and menu

- 7) Click 'Import Result' button, use the saved learning records file to synchronize your learning records to the current local PC. <Figure 3-7>



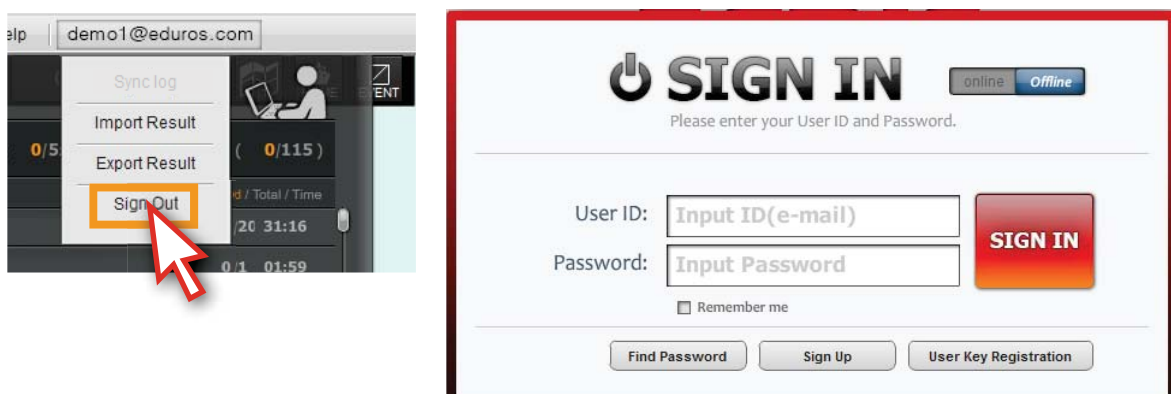
<Figure 3-7>

- 8) You can also use the 'Import Result' button on the lower right corner of the contents panel. <Figure 3-8>



<Figure 3-8>

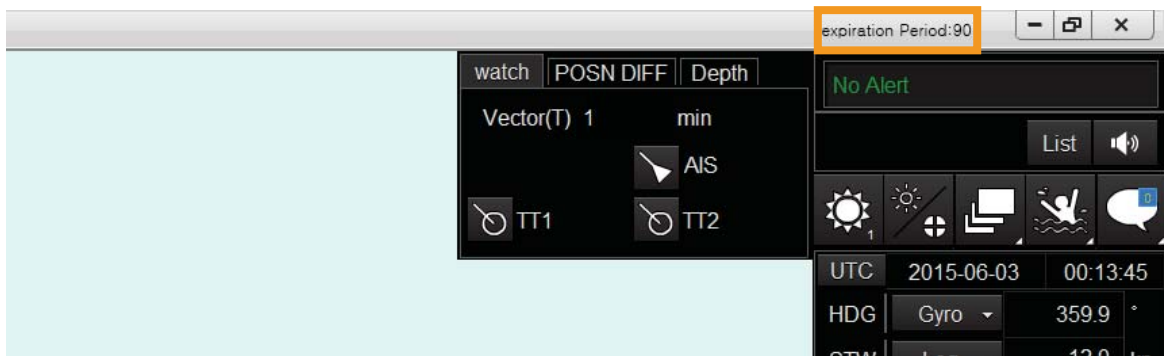
- 9) ※ Sign out: When you click this button, you will log out from training program. <Figure 3-9>
※ If you click 'Sign out' button to log out, the checked "Remember me" records will be removed.



<Figure 3-9>

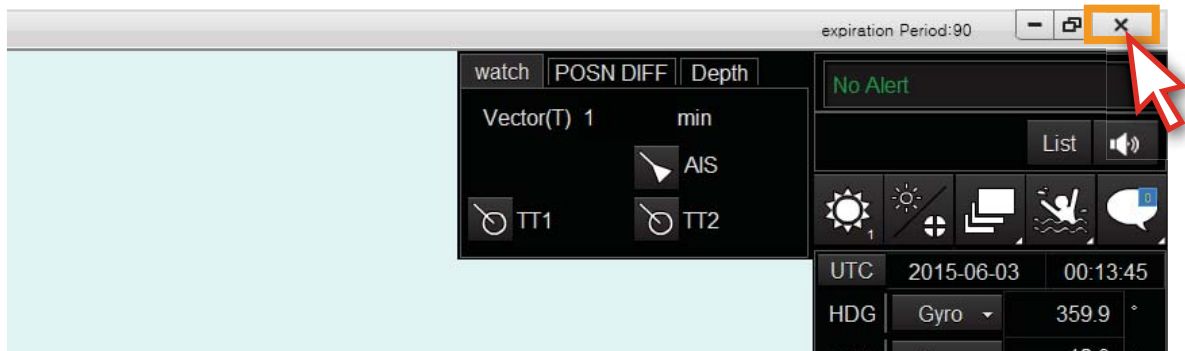
3. Screen and menu

10) Expiration Period: It shows the remaining valid days. <Figure 3-10>



<Figure 3-10>

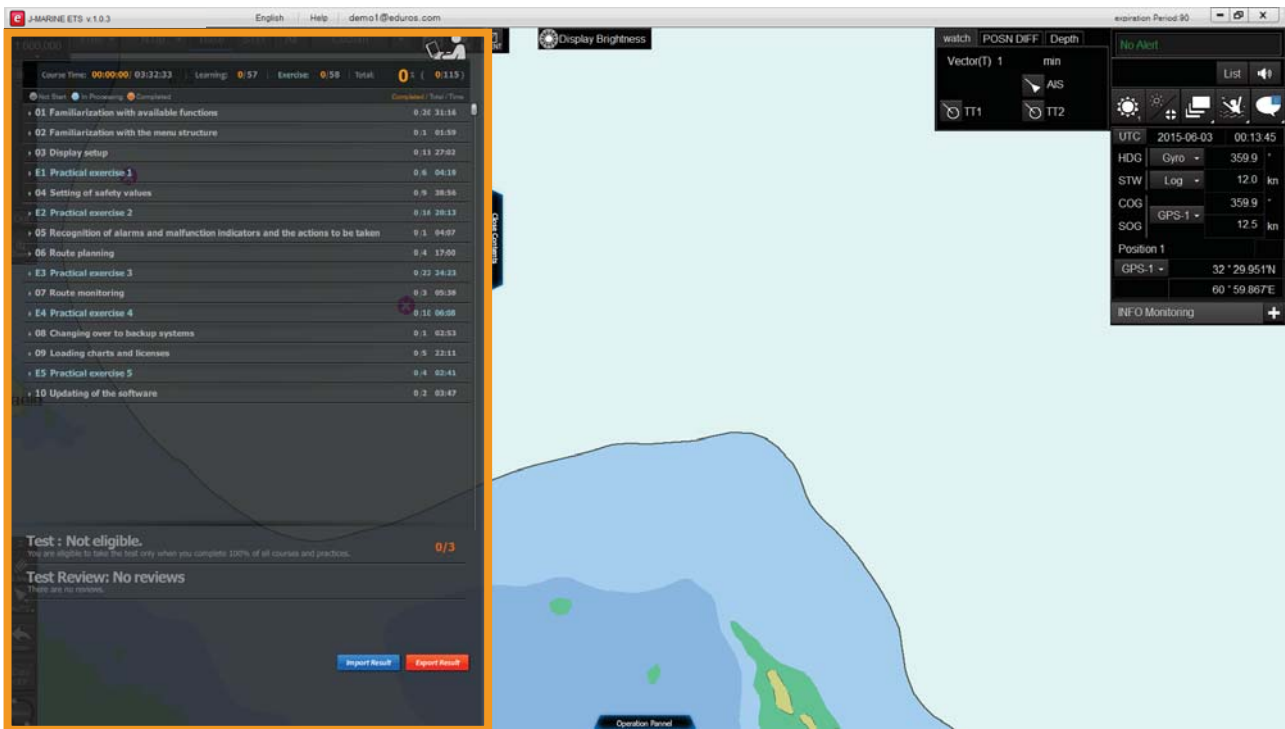
11) If you click the 'X' button, the program will be closed. <Figure 3-11>



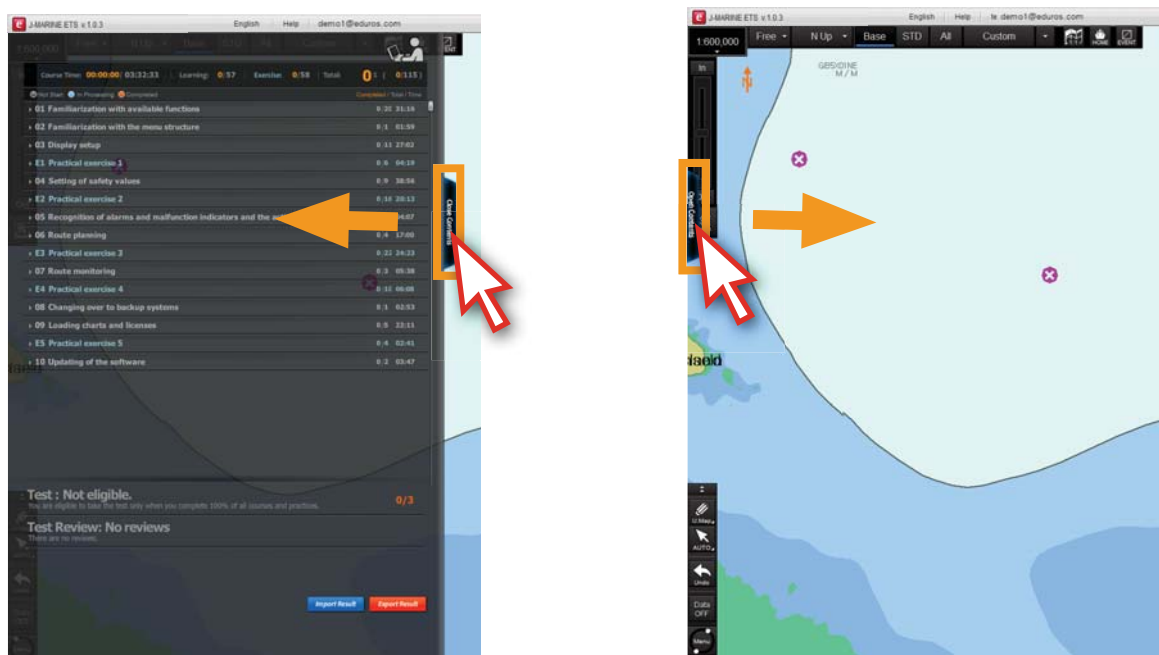
<Figure 3-11>

3. Screen and menu

3. Course menu description



12) Close and open the course menu with clicking the 'Close Contents' and 'Open Contents' button. <Figure 3-12>

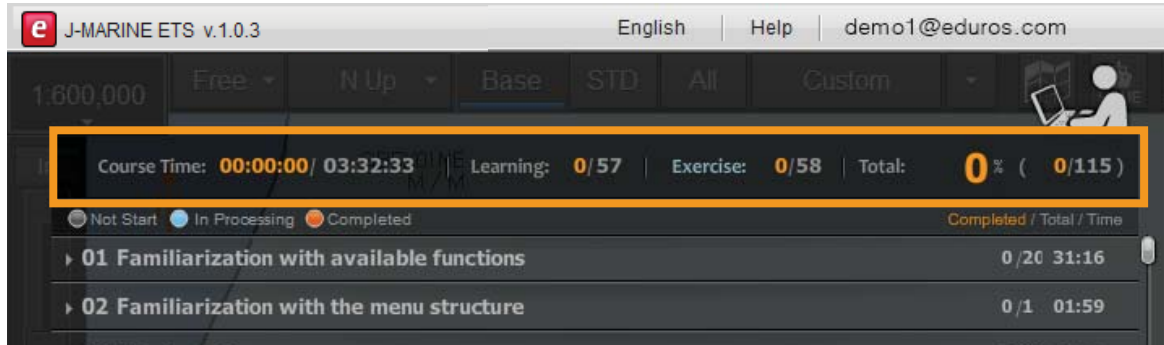


<Figure 3-12>

3. Screen and menu

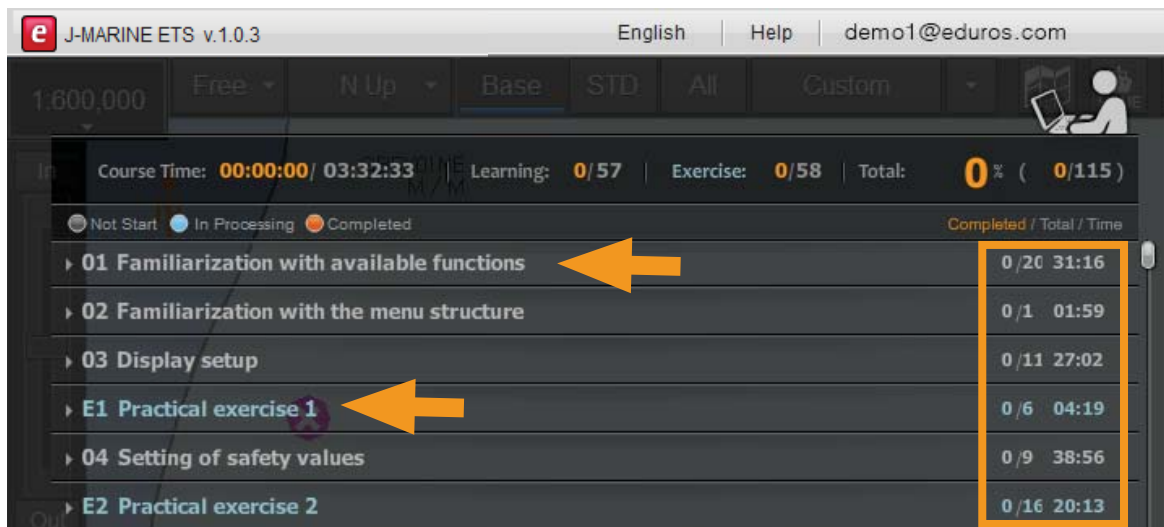
13) The user's learning status will be shown in the box. <Figure 3-13>

Course Time : Elapsed time / Total time Learning : 0/57 (Completed courses / Total courses)
Exercise : 0/58 (Completed exercises / Total exercises)
Total : 0% 0/115 (Rate of process completed courses / Total courses)



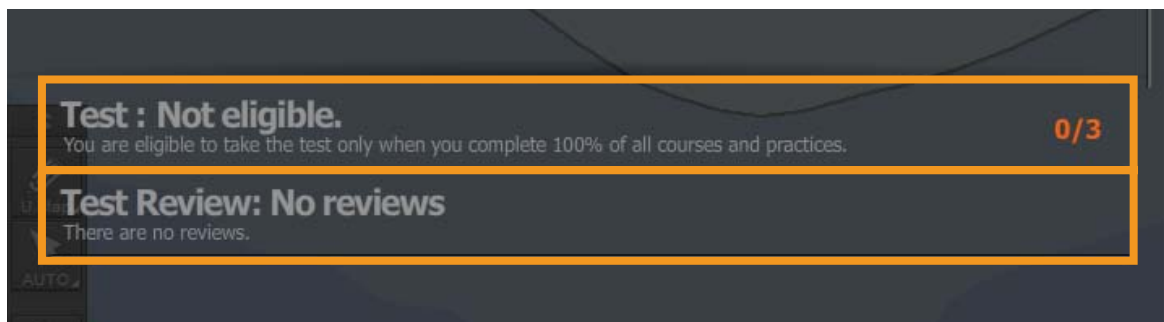
<Figure 3-13>

14) The letters in white are learning contents and in blue are exercise contents. Right part shows the number of contents and time. <Figure 3-14>



<Figure 3-14>

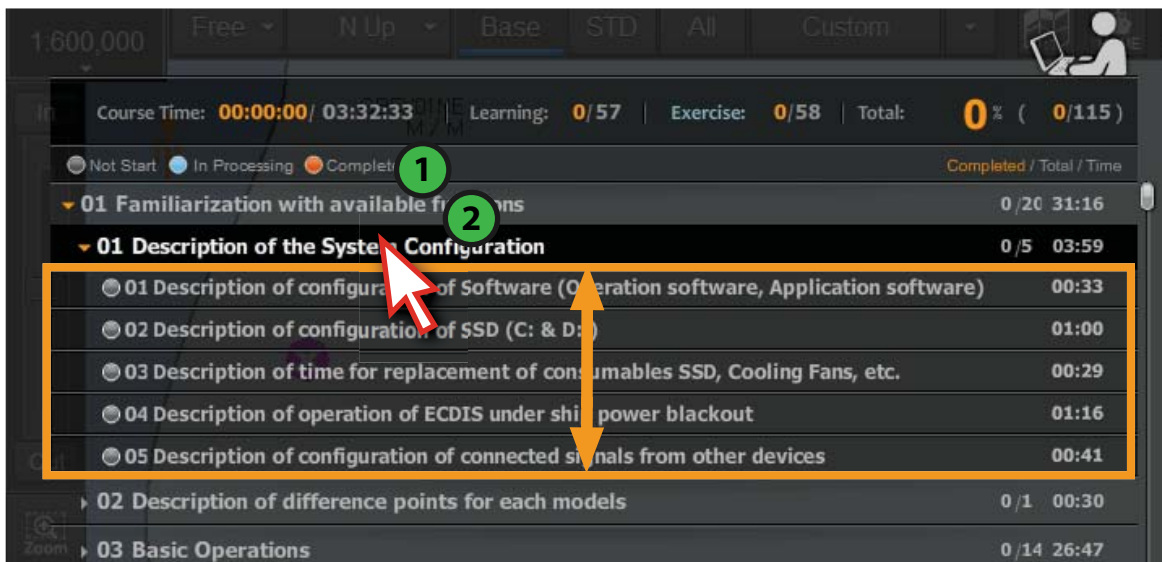
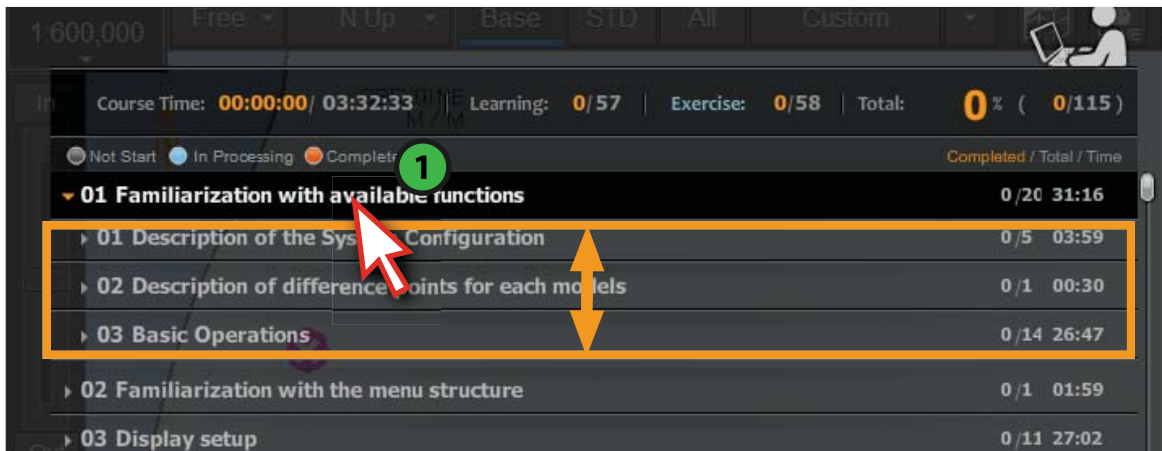
15) You can take the test after complete all of learning contents and exercise contents. Test Review. Check the explanation about the questions after the test. <Figure 3-15>



<Figure 3-15>

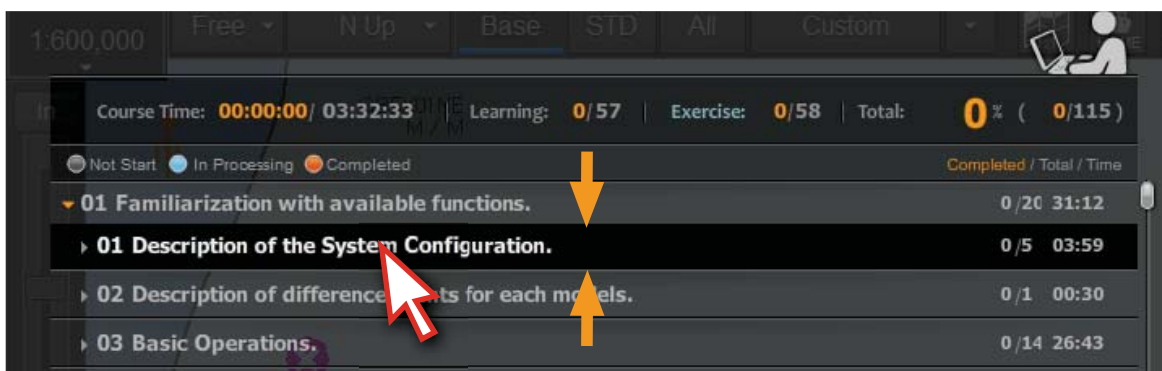
3. Screen and menu

16) You can select each 'title' on the course list and the sub-title list will be spreaded when you click each title. <Figure 3-16>



<Figure 3-16>

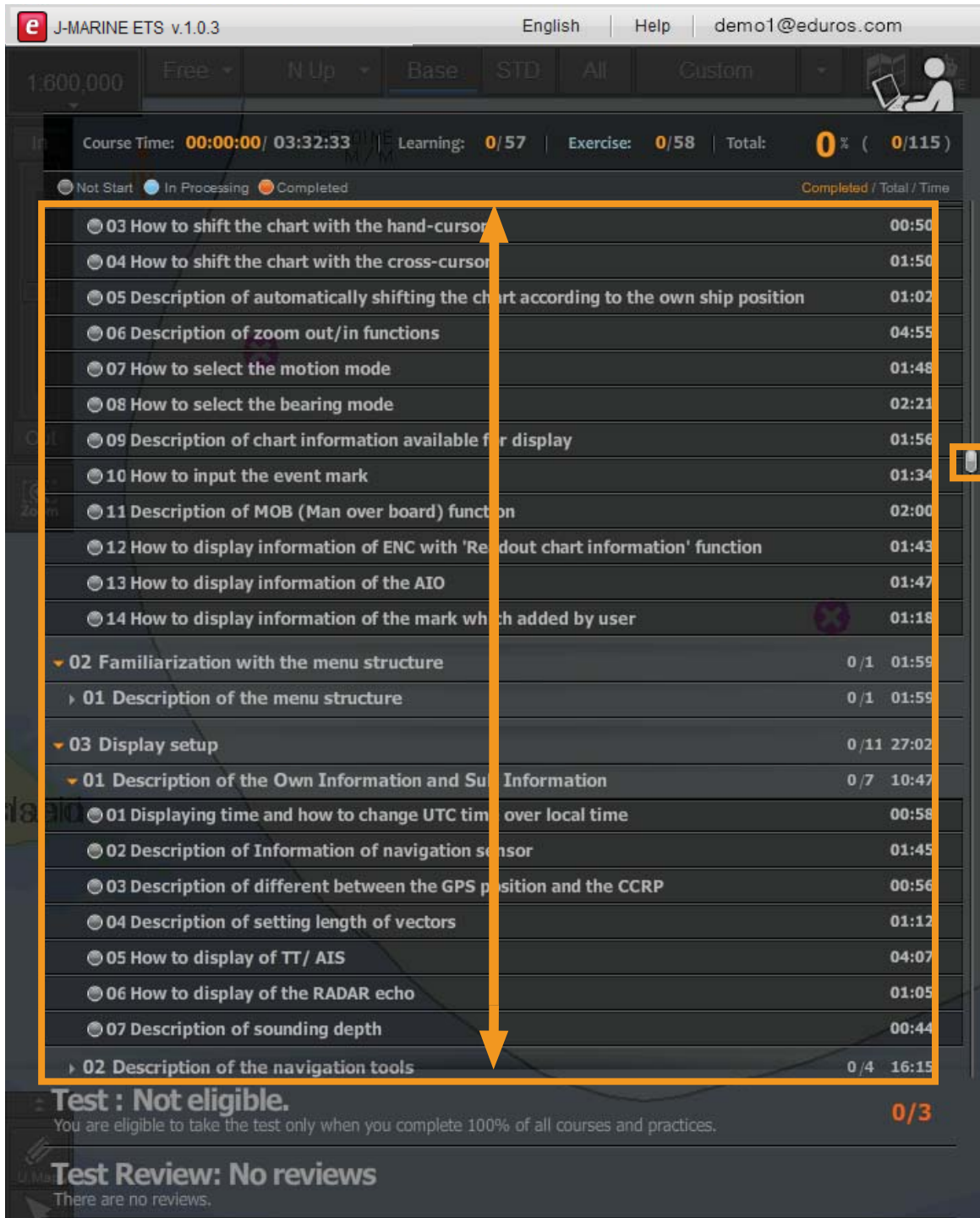
17) If you click the 'title' again, the sub-title list will be hidden. <Figure 3-17>



<Figure 3-17>

3. Screen and menu

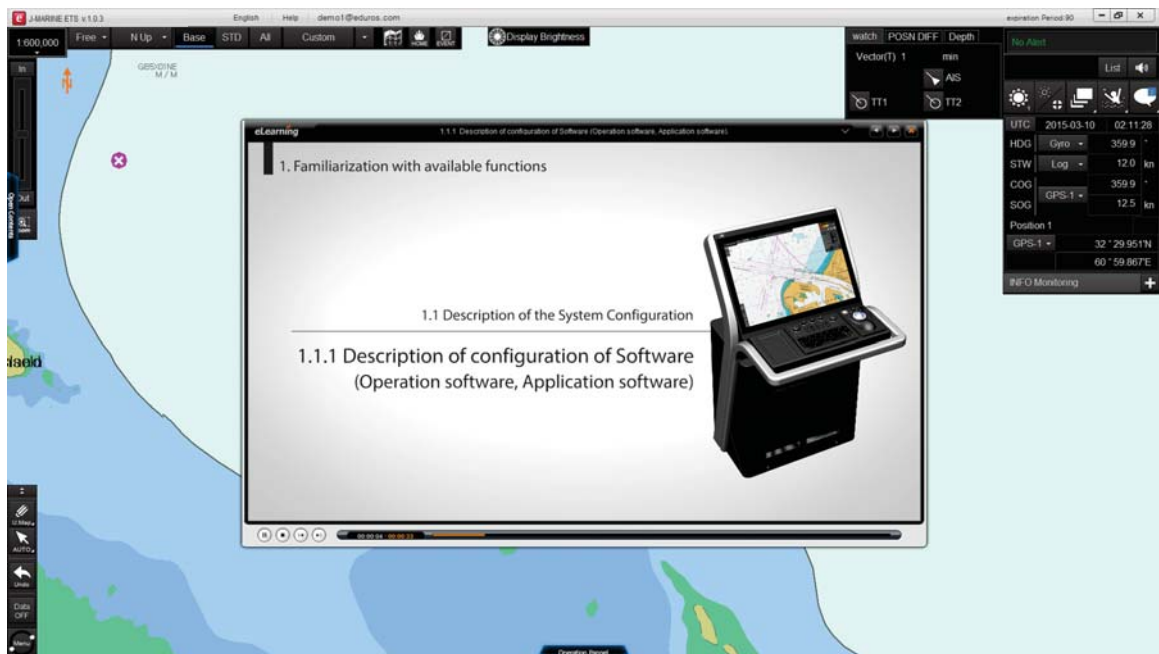
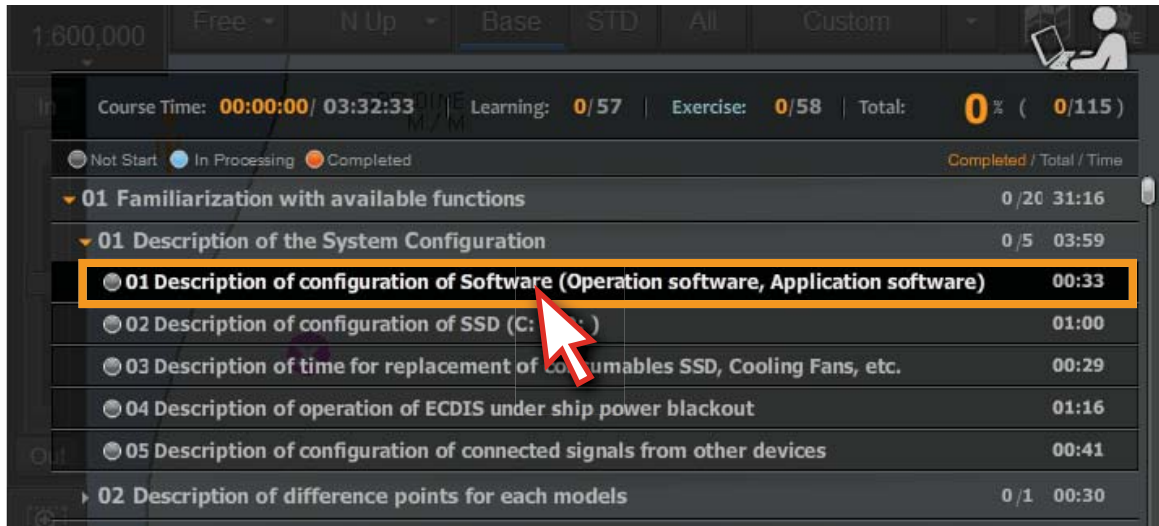
18) If you want to find out some specific course when a number of courses are displayed simultaneously, you can utilize the scroll function on the right side of screen. <Figure 3-18>



<Figure 3-18>

3. Screen and menu

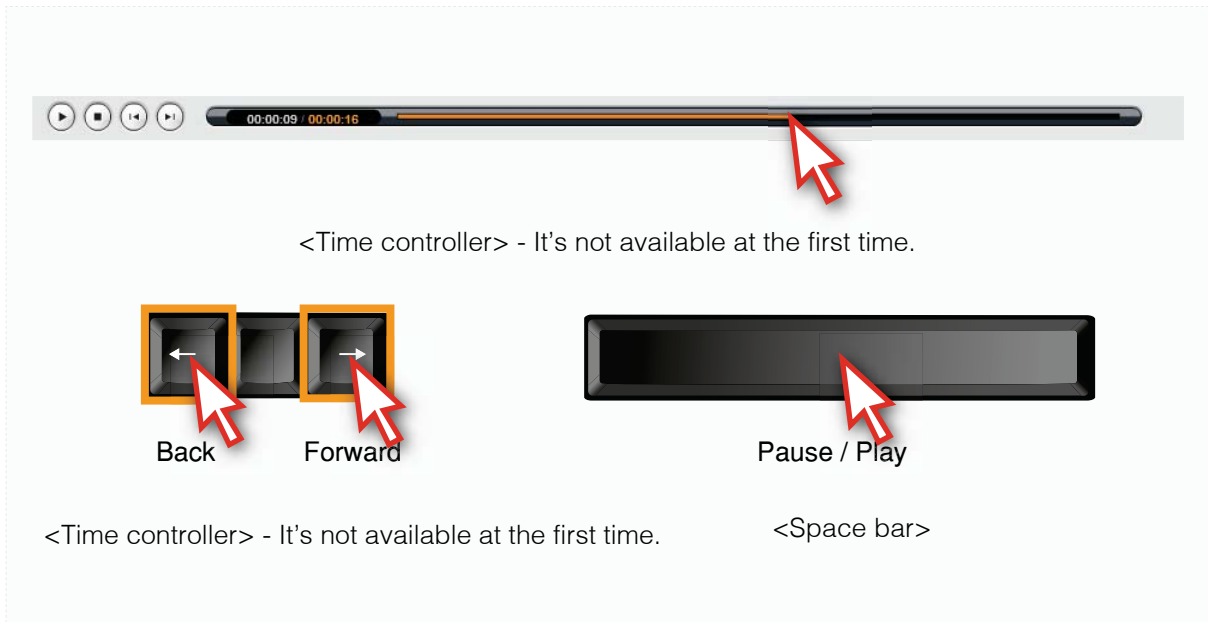
19) Click the titles to start learning the courses. <Figure 3-19>



<Figure 3-19>

3. Screen and menu

20) The animation can be controlled to back and forth by using the 'Arrow keys' and 'space bar' on the video player. <Figure 3-20>



<Figure 3-20>

21) Click the 'X' button to close the video when you finished watching the animation. <Figure 3-21>



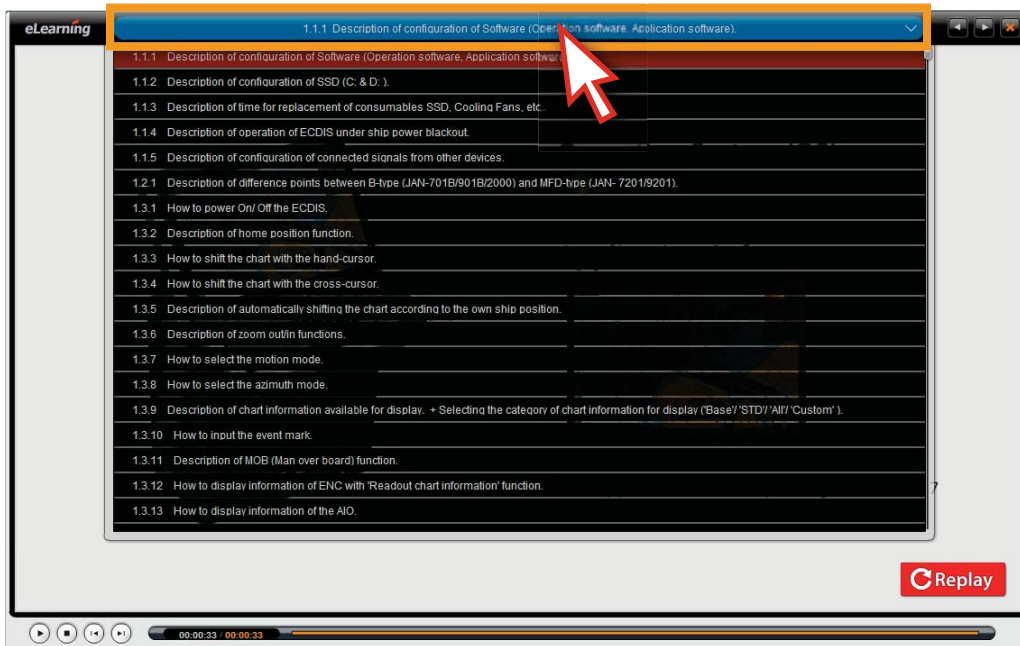
<Figure 3-21>

3. Screen and menu



How to select the other courses in the video player.

1. Click the title in the animation showing box, you can select the other courses from the popup list. (As shown below)

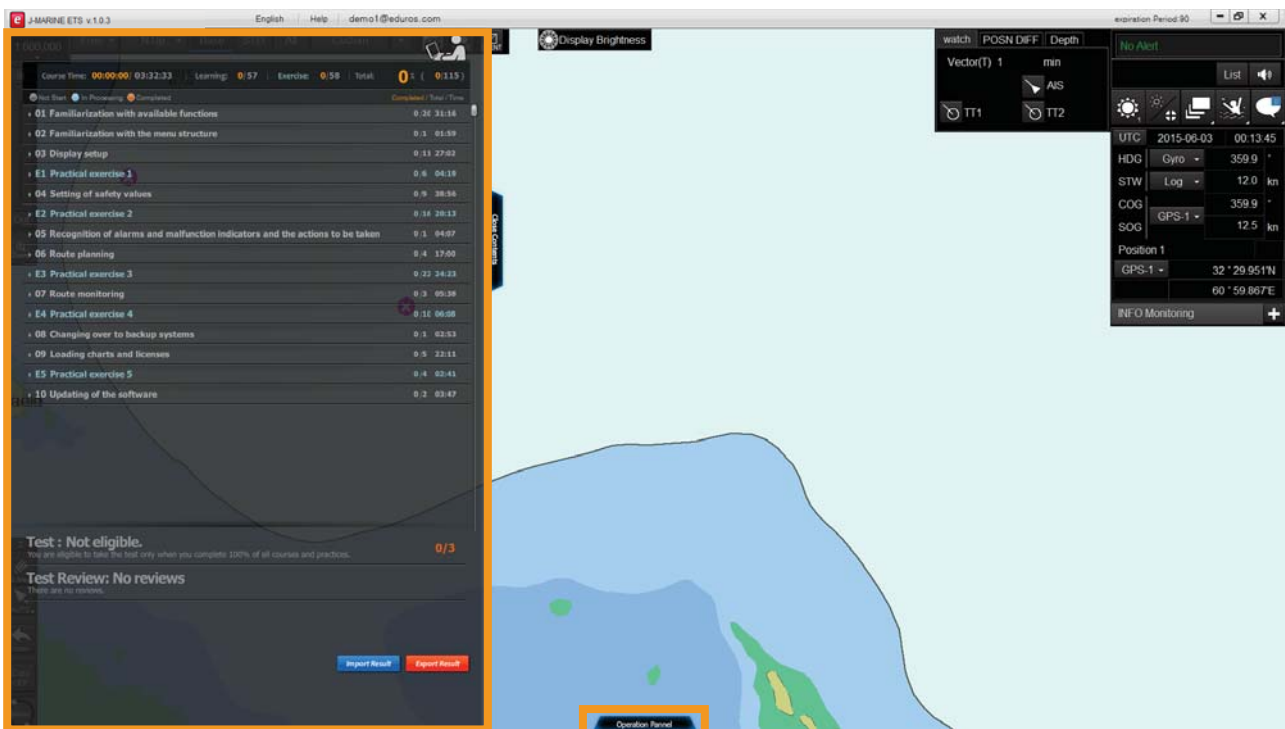


2. You can go to previous or next course with clicking the buttons. (As shown below)

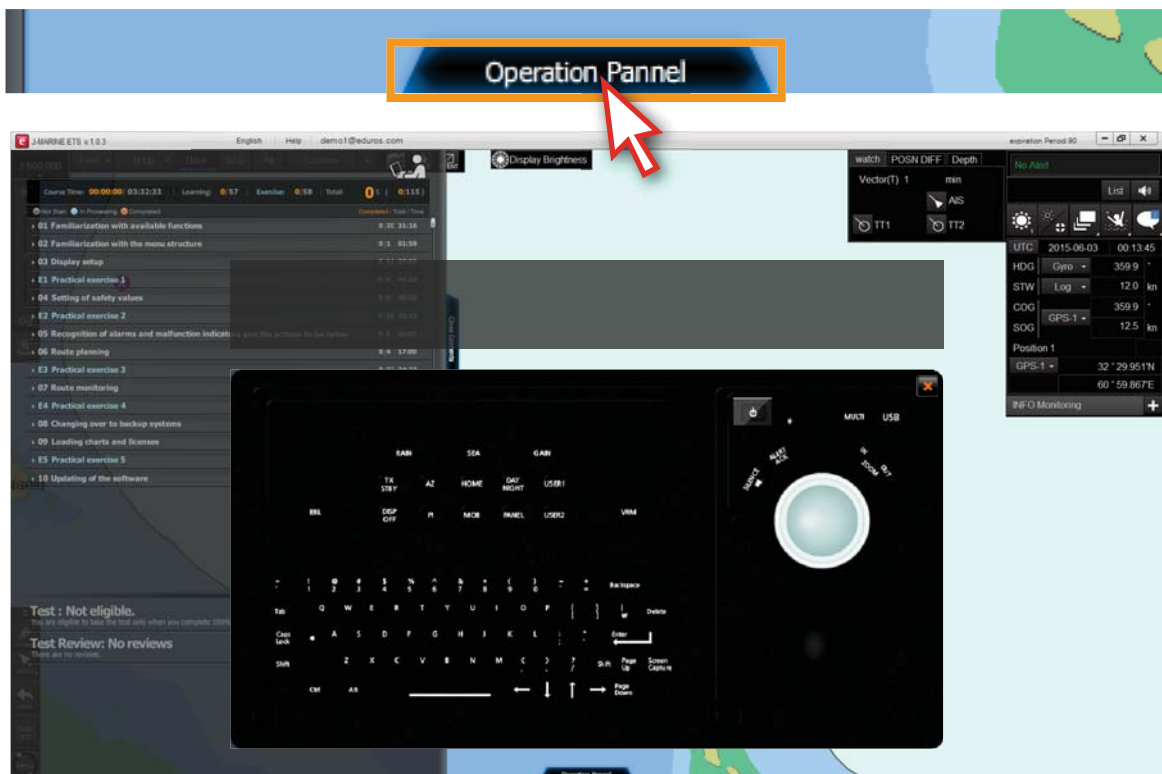


3. Screen and menu

4. Operation panel description



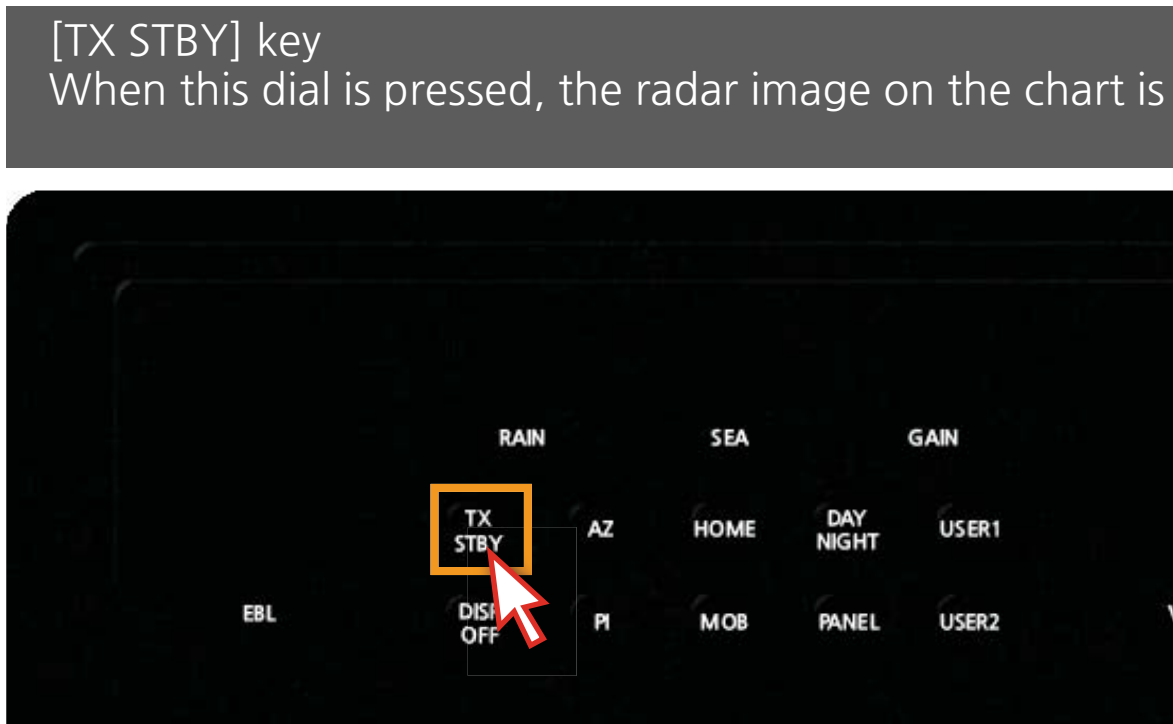
22) Click the 'Operation Panel' button, then the operation panel will appear. <Figure 3-22>



<Figure 3-22>

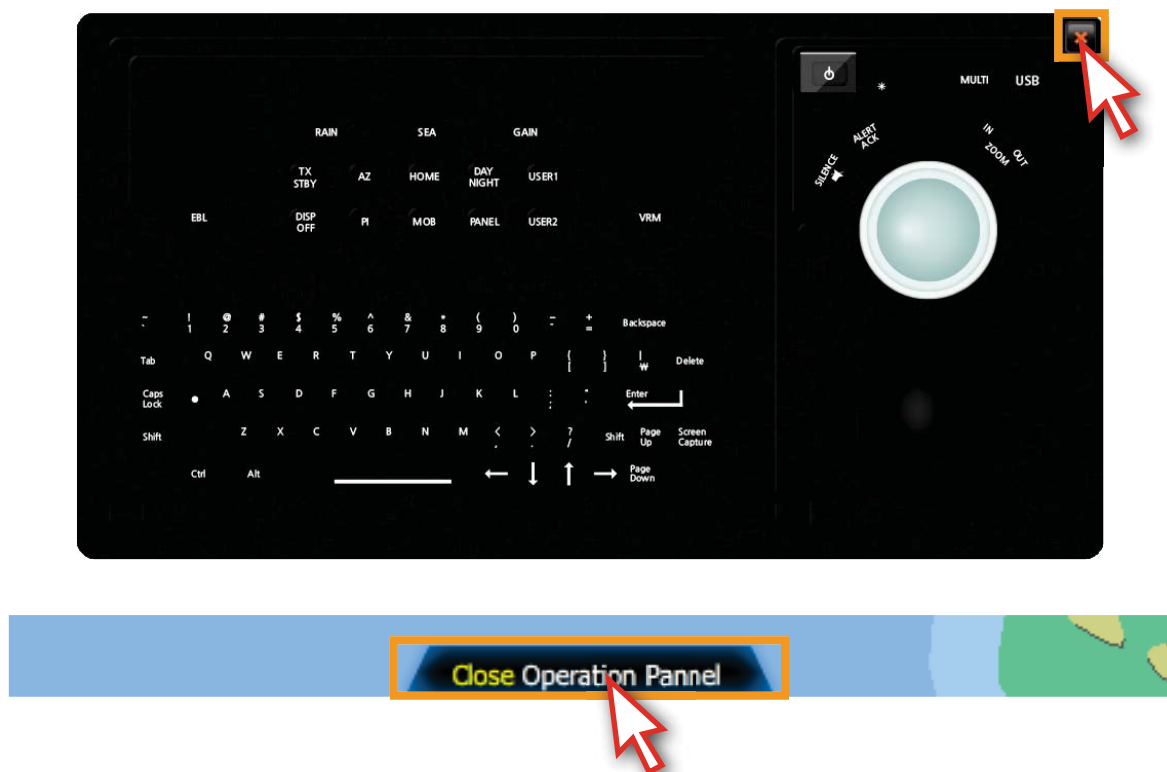
3. Screen and menu

23) You can see the detailed information of each button when the cursor moves on each button of the operation panel. <Figure 3-23>



<Figure 3-23>

24) Click 'X' or 'Close Operation Panel' to hide the operation panel. <Figure 3-24>



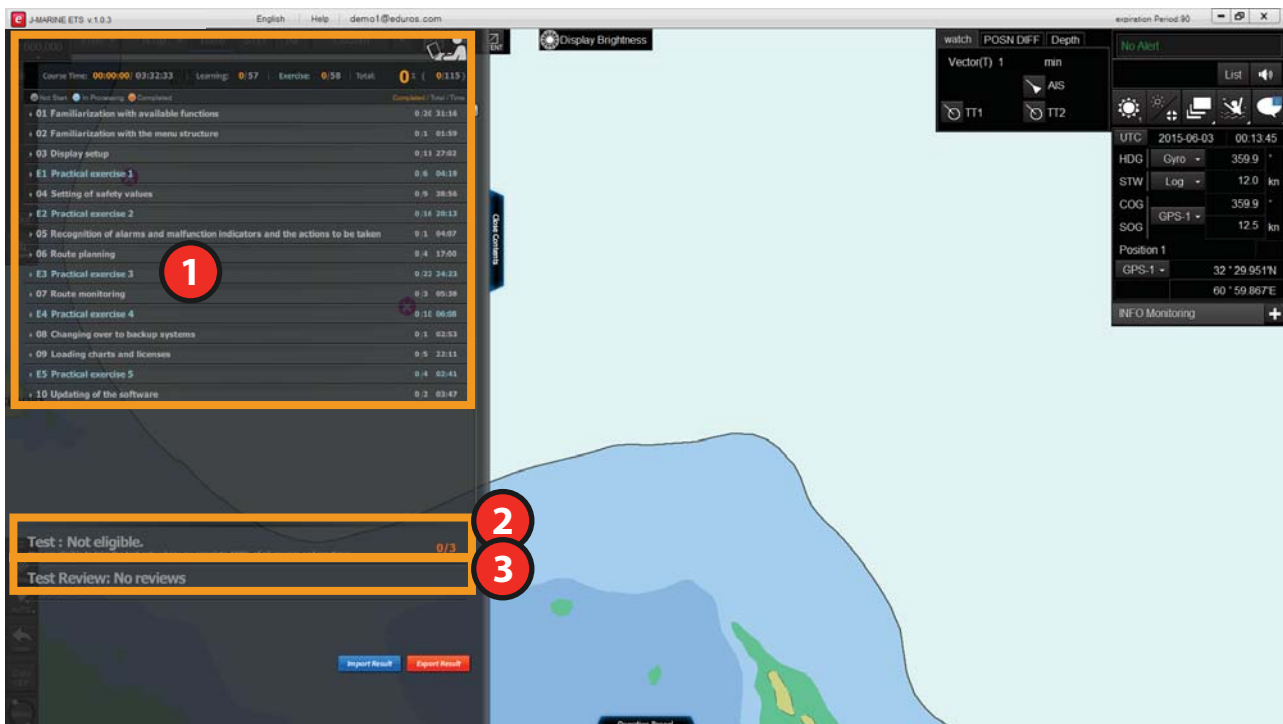
<Figure 3-24>

4. Learning

1. Learning overview
2. Learning course
3. Exercise course - Step by step
4. Exercise course - Practice by oneself
5. Penalty of Practice by oneself

4. Learning

1. Learning overview



- 1 There are 115 courses altogether. It is a place where you can find all courses at a glance. The sub-title list will appear when you click each title.
- 2 Test part. It can be available only after you complete all of learning contents and exercise contents.
- 3 Use it to review the previous test.

- 115 courses in total.

Contents Part (This part consists of 57 animation courses containing 10 nautical charts.)

Exercise Part (This part consists of 58 practice courses containing 4 nautical charts.)

- Well-organized learning.

- Timely checking of learning status.

- Possible to review the contents on your own without any limitations.

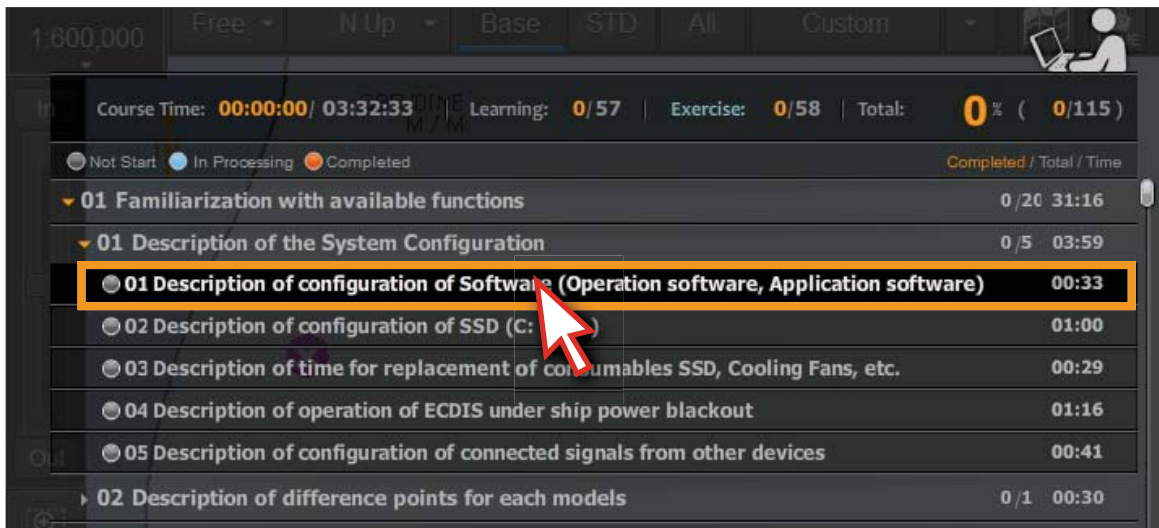
- Test qualification will be given once you complete all of the courses.

- Learning records is saved automatically.

4. Learning

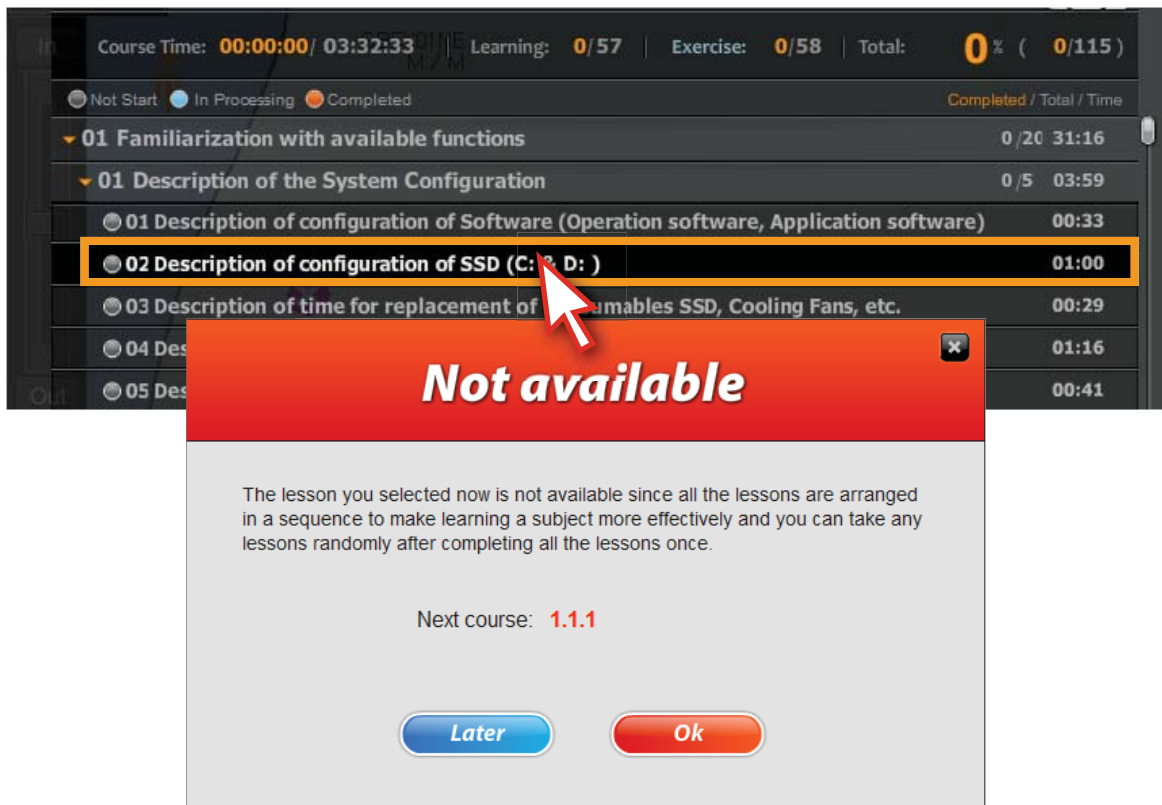
2. Learning course

1) You should take the course step by step. <Figure 4-1>



<Figure 4-1>

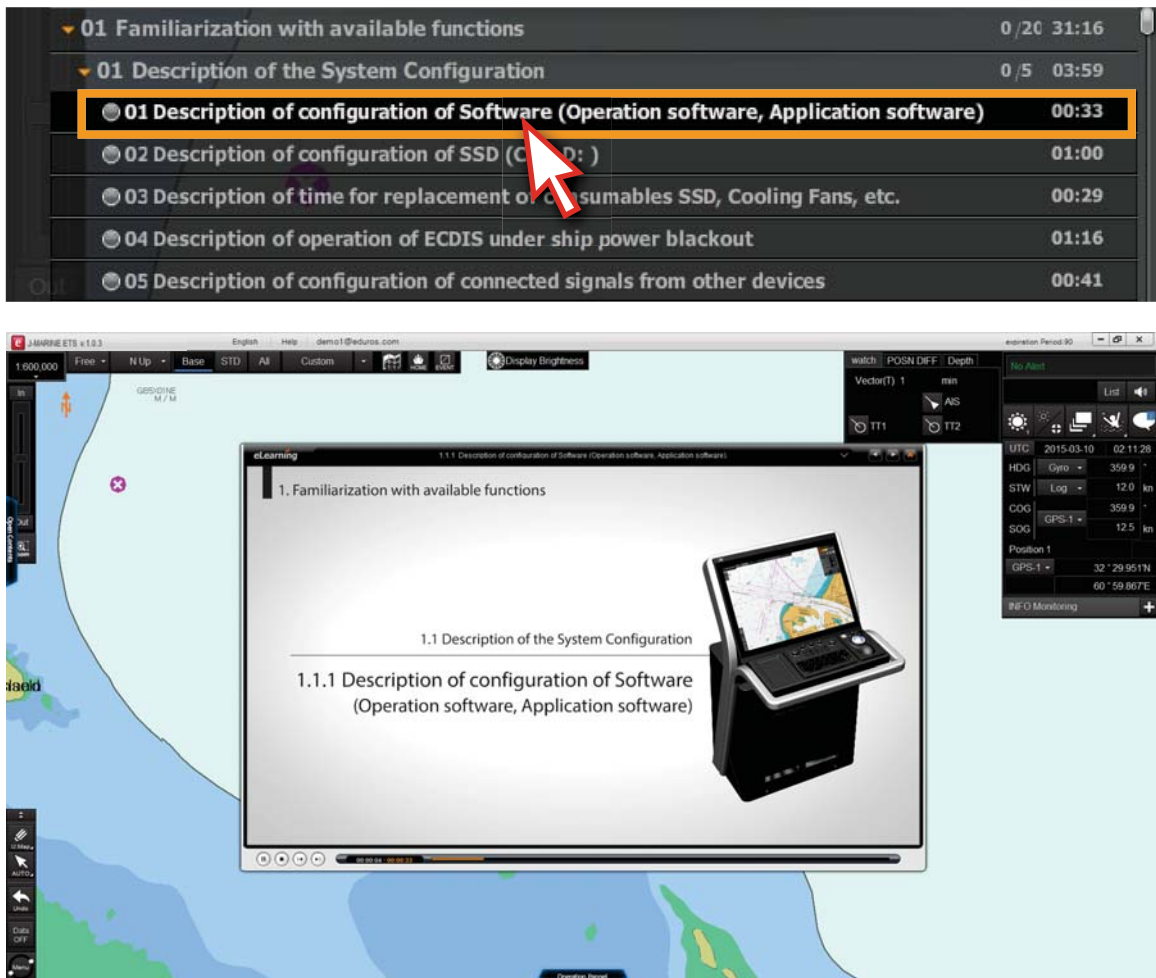
2) If you select the course randomly, the reminding pop-up window will appear.
<Figure 4-2>



<Figure 4-2>

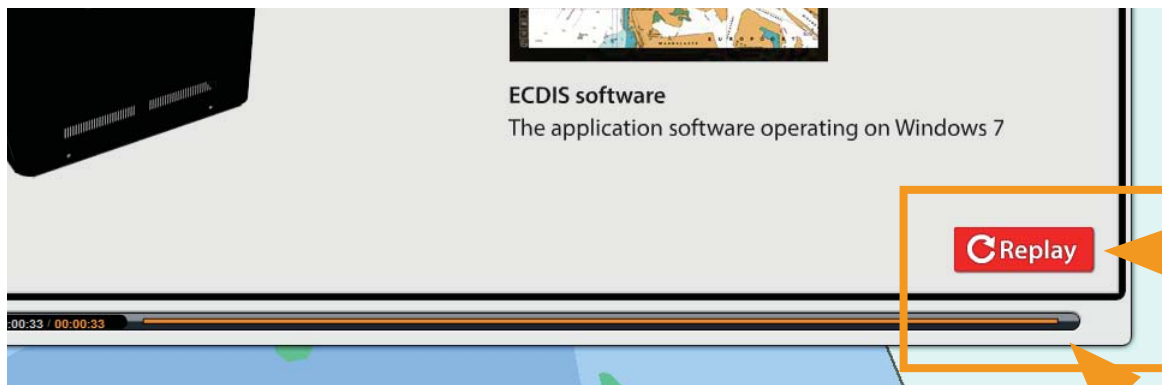
4. Learning

3) Click the first course, start to learn. Then the animation video plays. <Figure 4-3>



<Figure 4-3>

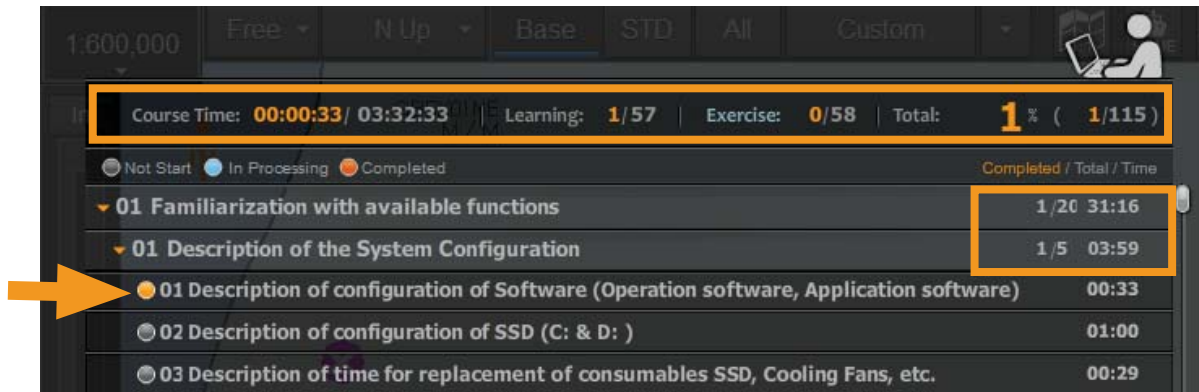
4) The replay button will appear at the end of the video, it indicates this unit has finished. <Figure 4-4>



<Figure 4-4>

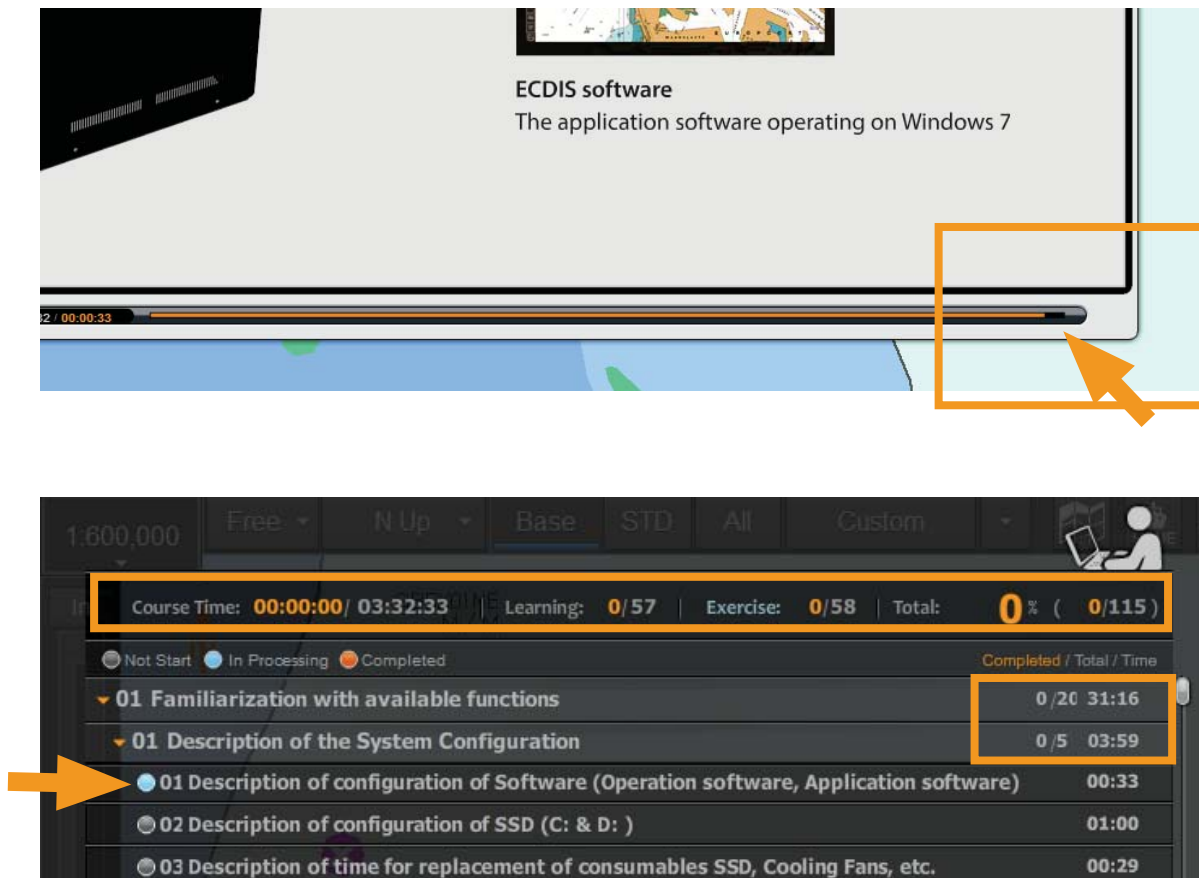
4. Learning

- 5) The icon will become into orange when you complete the objective content.
The learning history will be recorded also. <Figure 4-5>



<Figure 4-5>

- 6) If the course hasn't finished, the icon will become into blue and the learning history won't be recorded, either. <Figure 4-6>



<Figure 4-6>

3. Exercise course - Step by step

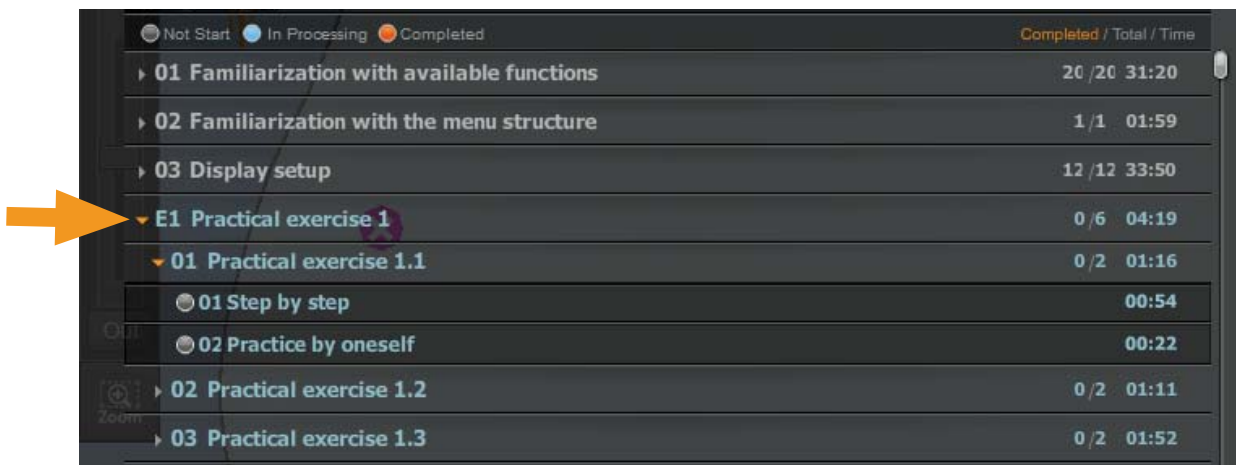
7) The titles of exercise part are in blue. The drop-down list will appear when you click the exercise title.

It consists of 'Step by step' and 'Practice by oneself' courses.

'Step by Step' is a learning method that you can learn the course orderly as instruction.

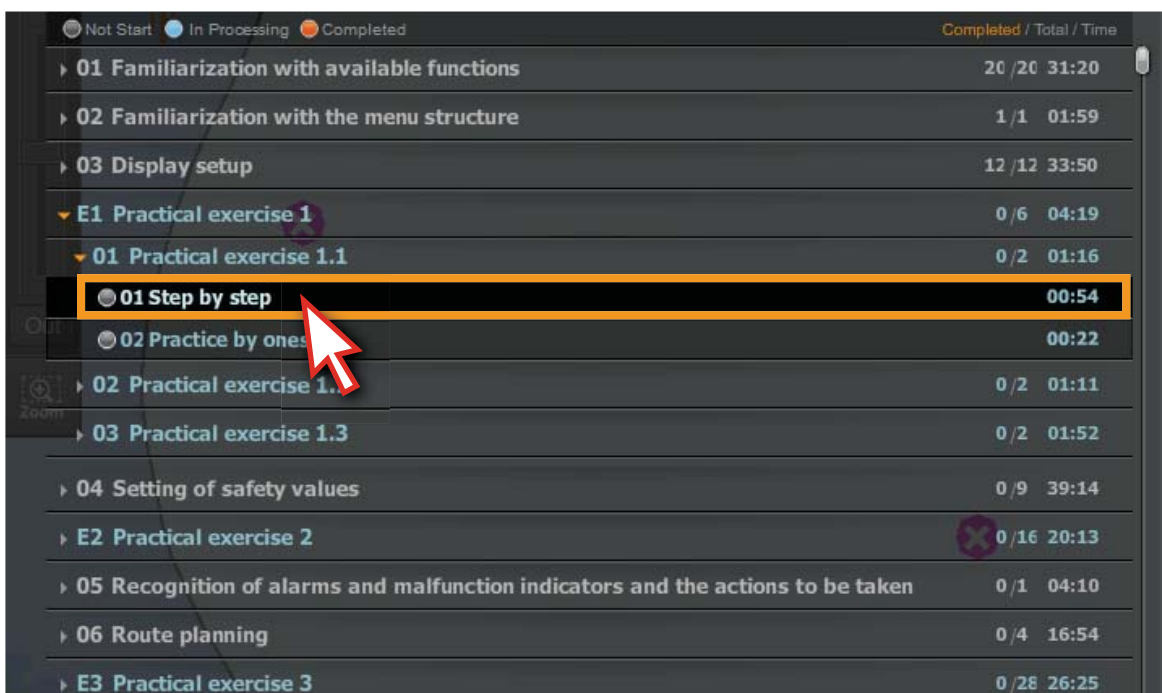
'Practice by oneself' is a learning method that you exercise by yourself without instruction.

<Figure 4-7>



<Figure 4-7>

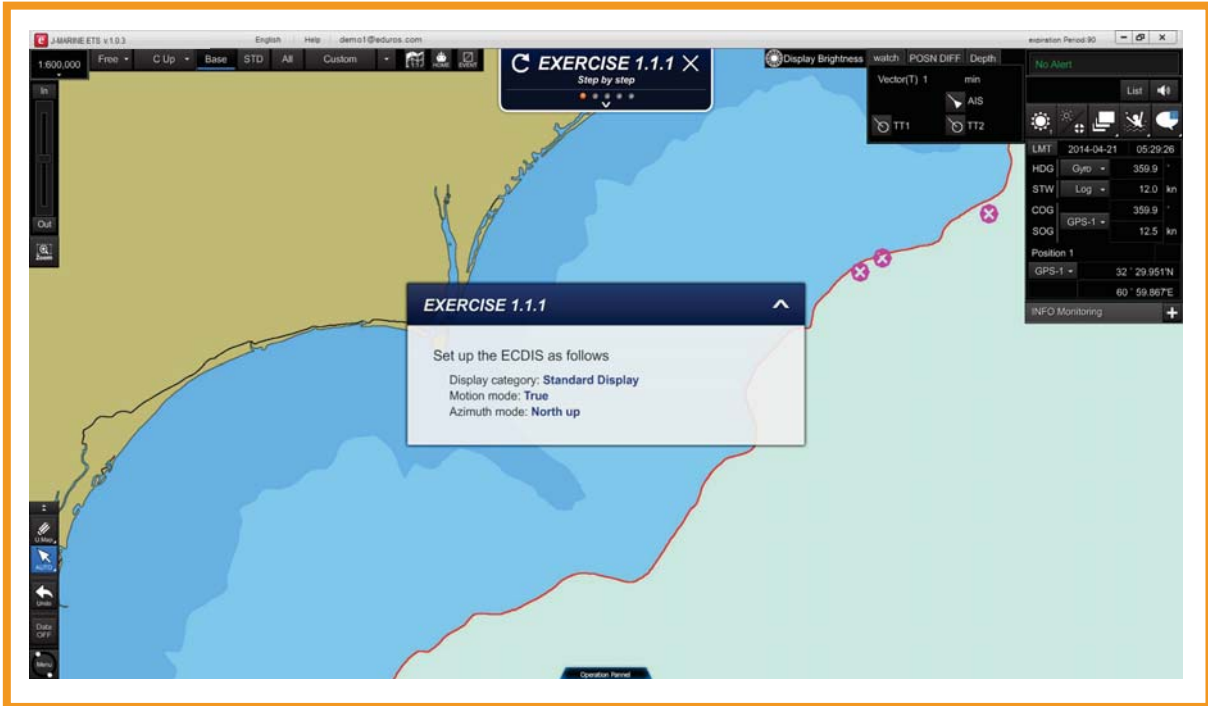
8) Click the 'Step by step'. <Figure 4-8>



<Figure 4-8>

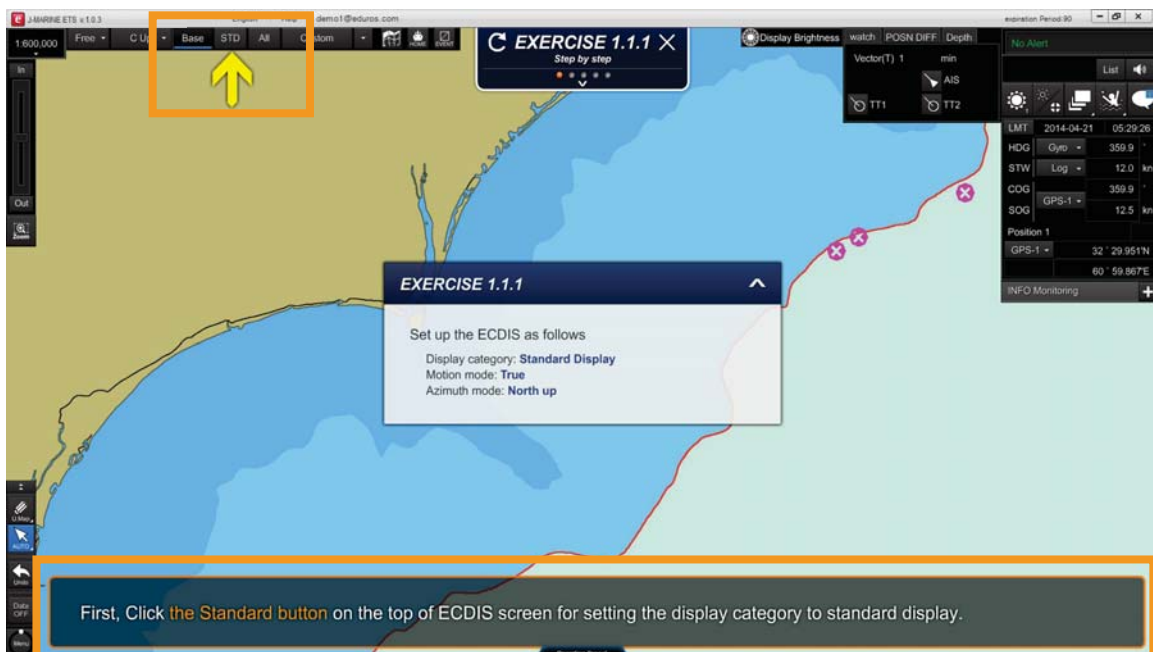
4. Learning

9) A new window will appear, full of the screen. <Figure 4-9>



<Figure 4-9>

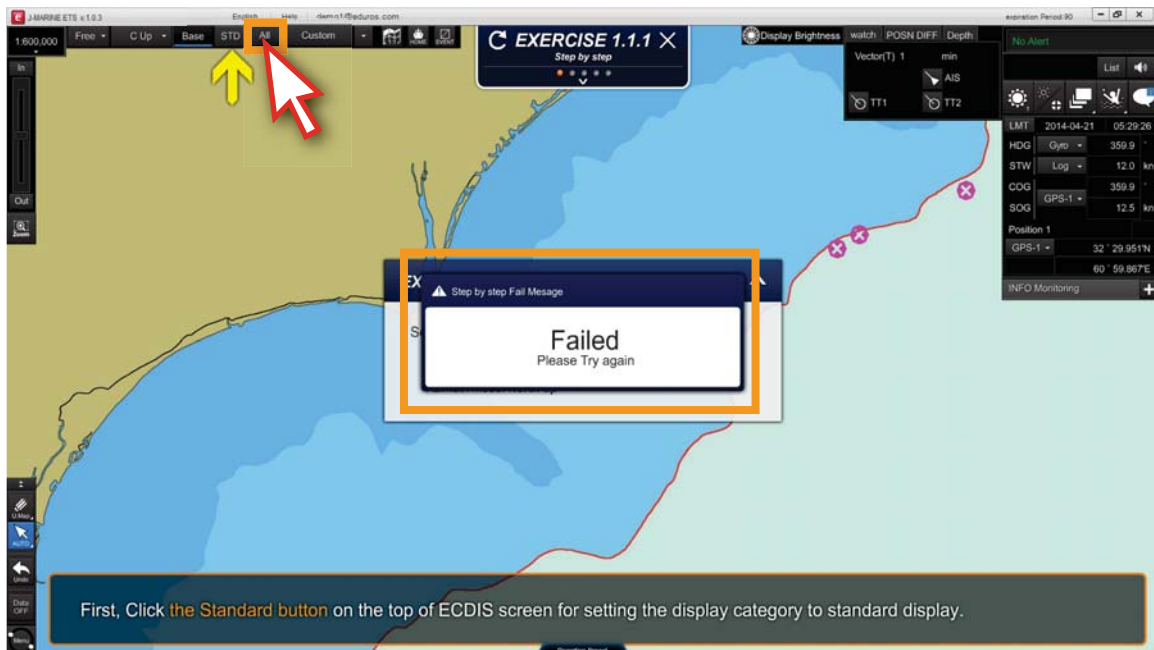
10) Click the buttons according to arrow pointing and take exercise according to instruction.
<Figure 4-10>



<Figure 4-10>

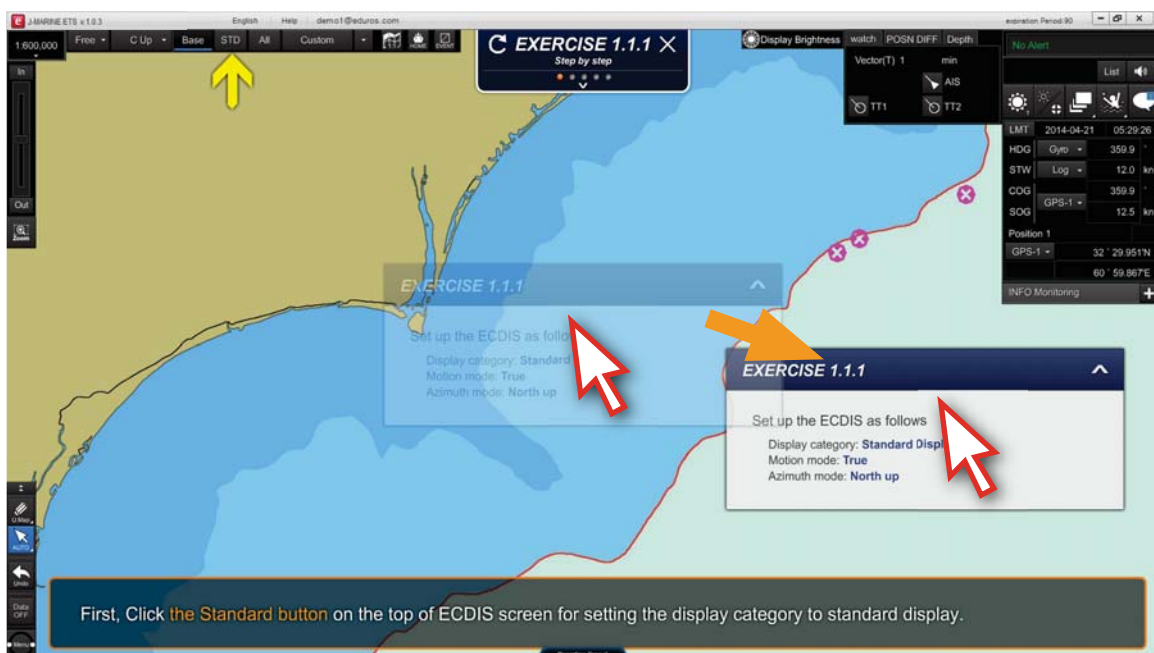
4. Learning

11) If you didn't click according to instruction, the 'Failed' message will pop up. <Figure 4-11>



<Figure 4-11>

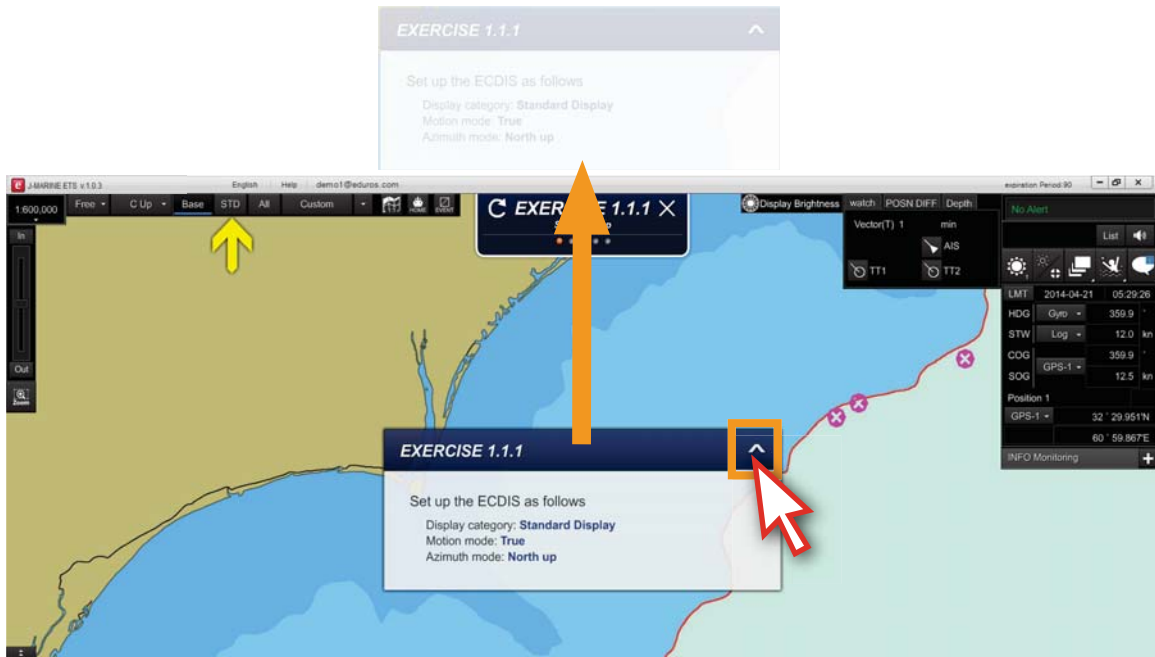
12) You can drag, move and hide the question pop-up window by mouse. <Figure 4-12>



<Figure 4-12>

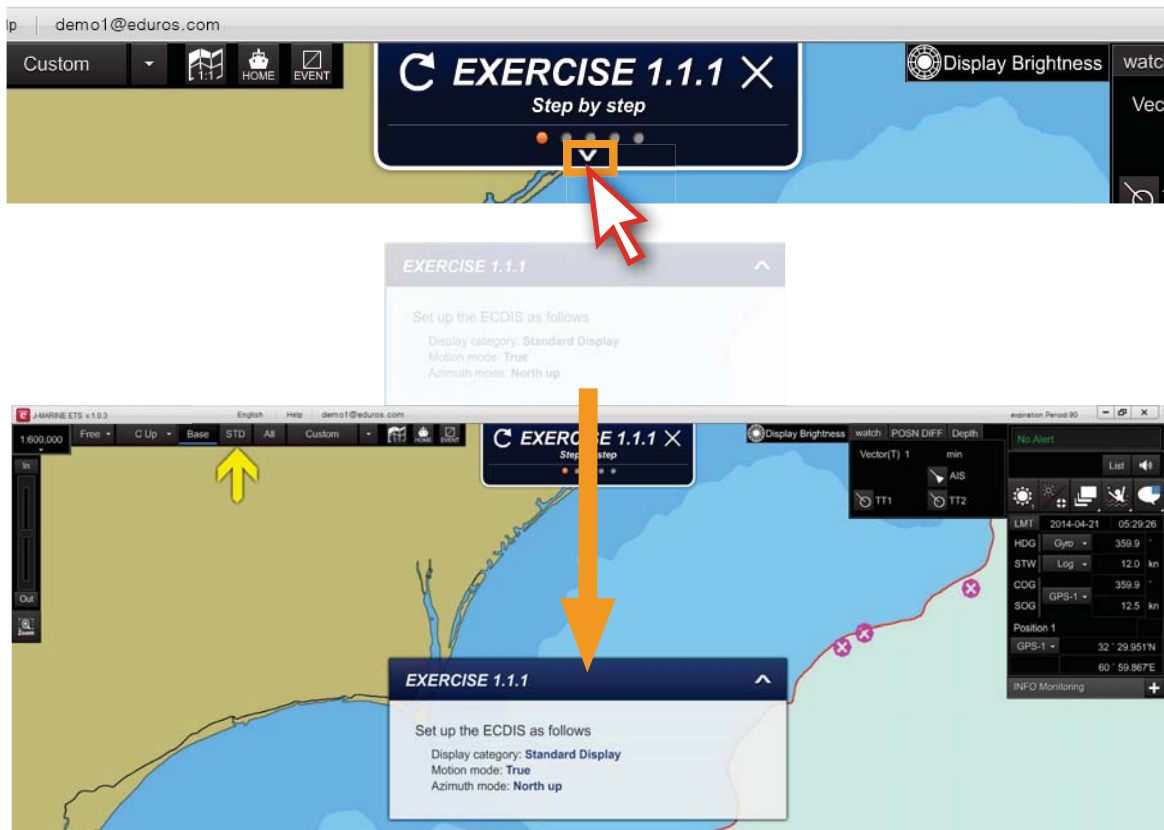
4. Learning

13) Click the ' ^ ' button to hide the pop-up window. <Figure 4-13>



<Figure 4-13>

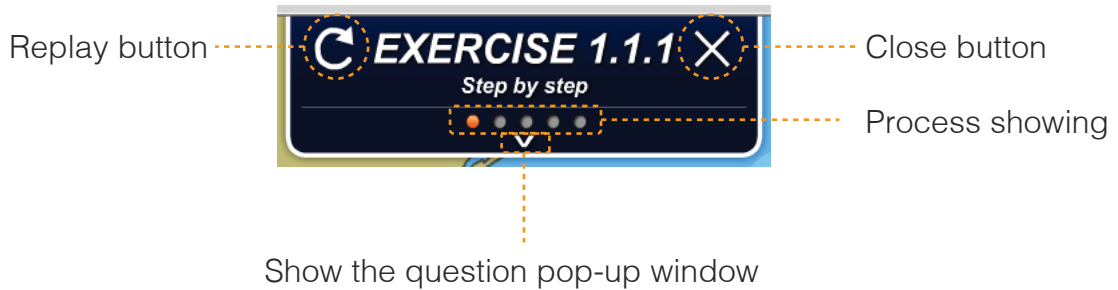
14) Click the ' v ' button to show the pop-up window again. <Figure 4-14>



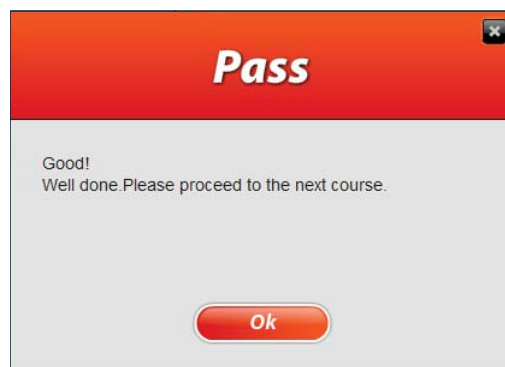
<Figure 4-14>

4. Learning

Details about 'Step by step' title bar.

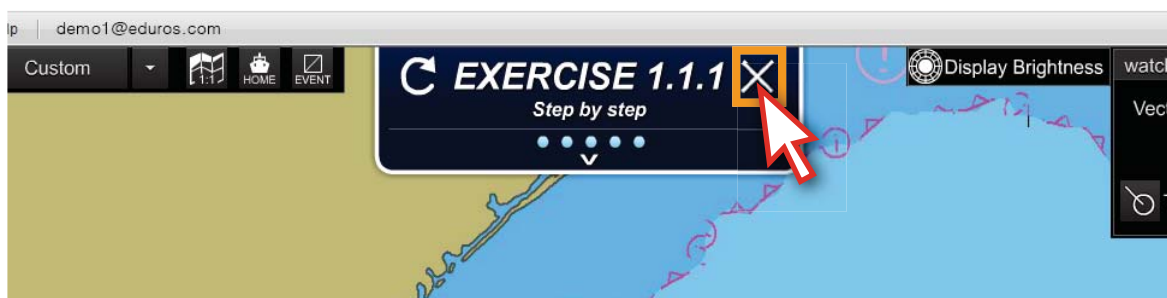


15) When you finished one course, the 'Pass' window will pop up to acknowledge that the course is completed. <Figure 4-15>



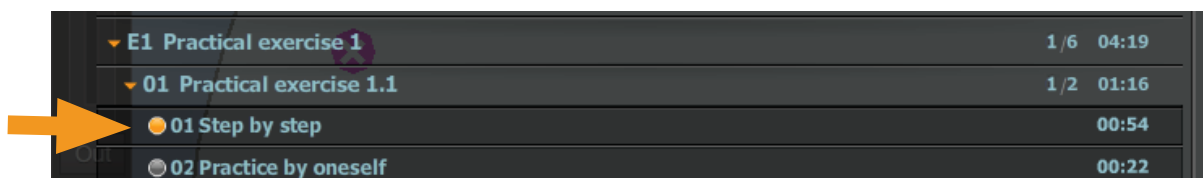
<Figure 4-15>

16) Click 'X' button to close the 'step by step' window. <Figure 4-16>



<Figure 4-16>

17) The icon will become into orange. As shown below. <Figure 4-17>

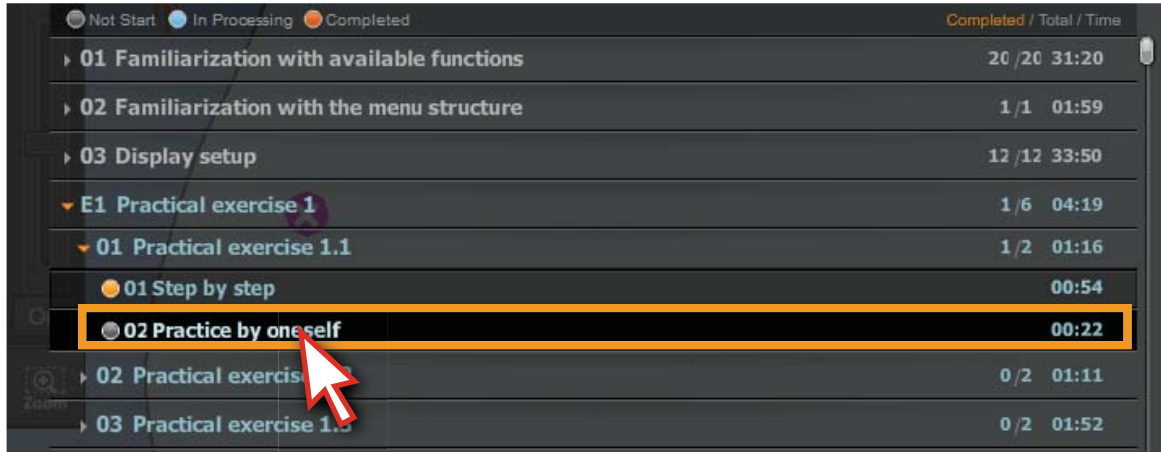


<Figure 4-17>

4. Learning

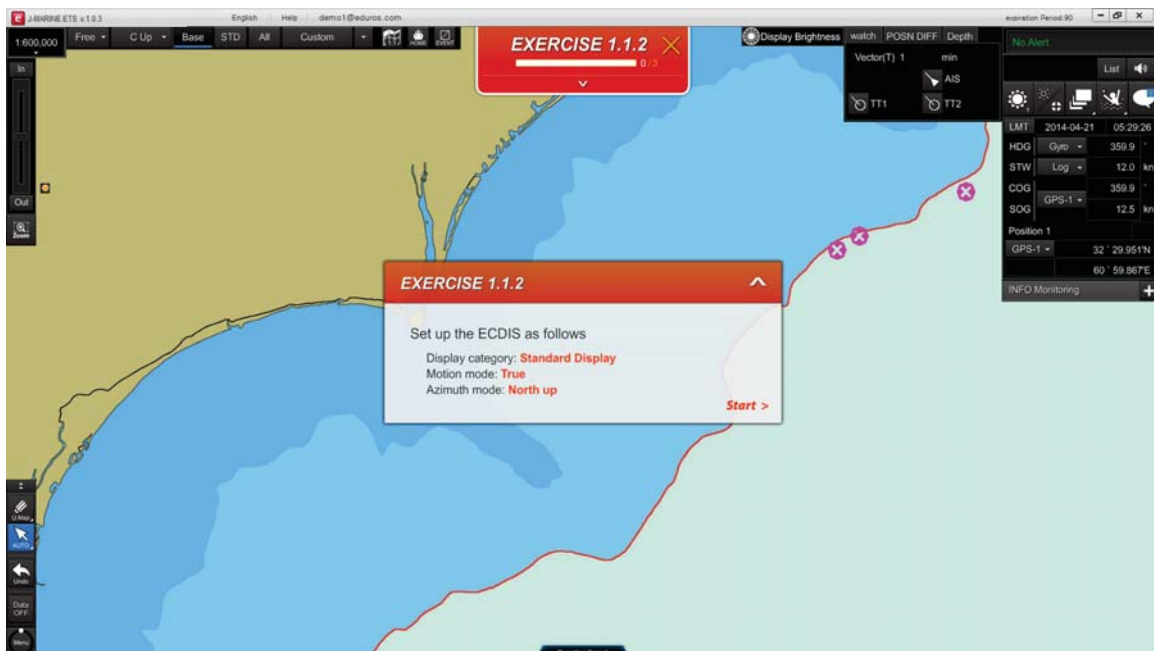
4. Exercise course - Practice by oneself

18) Click the 'Practice by oneself'. <Figure 4-18>



<Figure 4-18>

19) A new window will appear, full of the screen. And, the title bar and the pop-up window will show in another color orange. <Figure 4-19>



<Figure 4-19>

20) After the 'Start' button disappeared from the screen, the course will start, you should carry out the exercises by yourself without any further instruction.

※ Please refer to the 'Practice by oneself' penalty in Page 38~39.

4. Learning



Details about 'Practice by oneself' title bar.

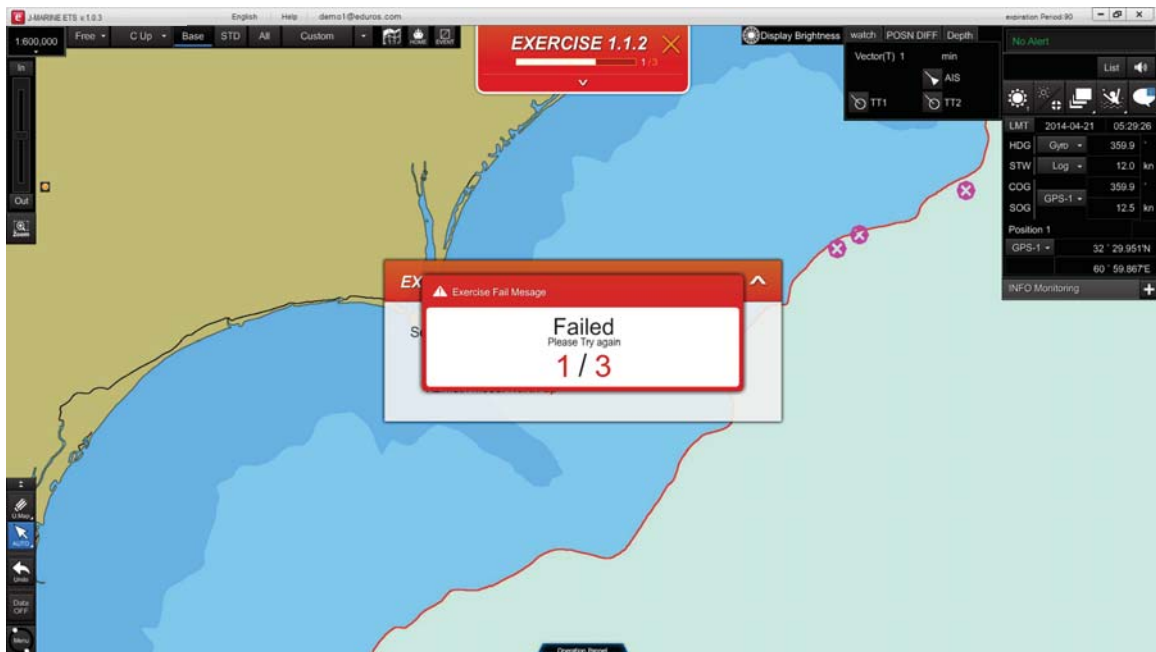


Close button

The maximum
mistake time

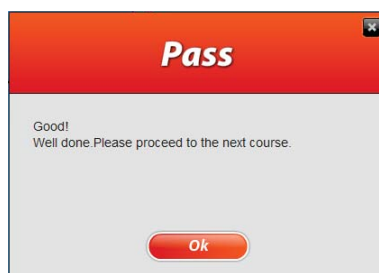
Show the question pop-up window

21) You should practice it yourself in the same order as previously instructed in the step by step chapter, if you click other buttons, the 'Failed' caution message will appear.



<Figure 4-21>

22) When you finished one course and the mistake you make is less than maximum, the 'Pass' window will pop up to acknowledge that the course is completed. <Figure 4-22>



<Figure 4-22>

23) However, if the mistake you made is more than three (3), the penalty messages will appear.

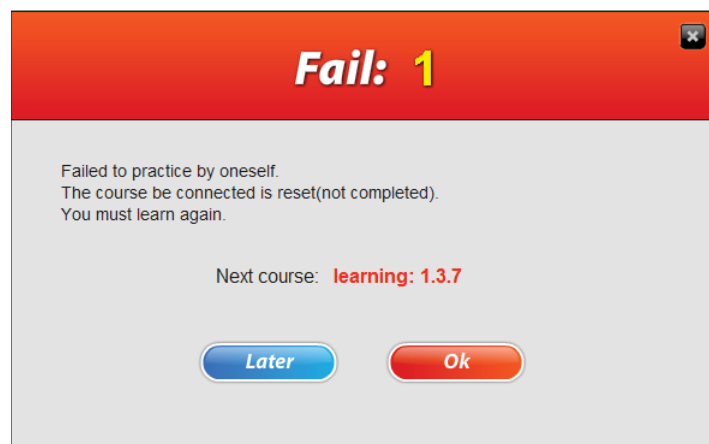


Review and reassess of 'Practice by oneself' -1

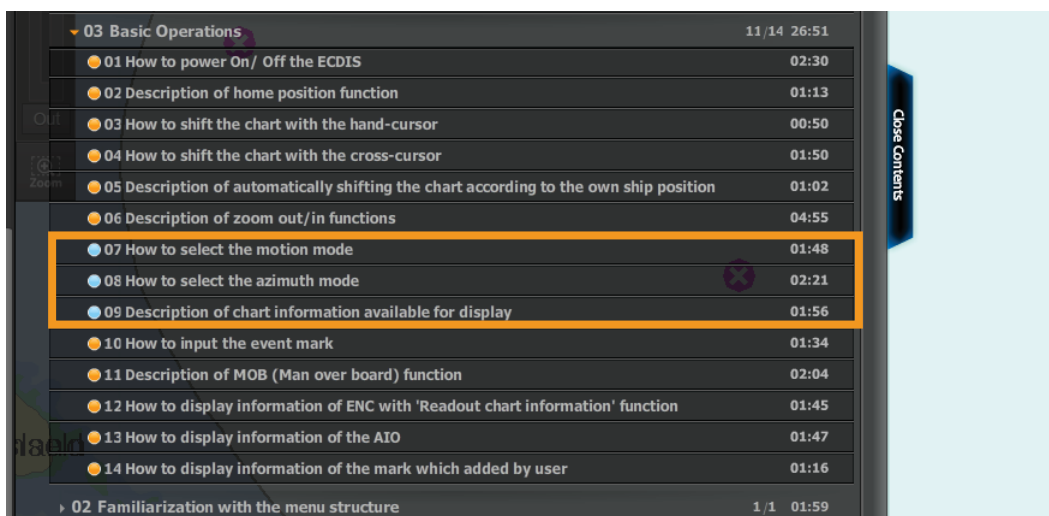
The mistake you made is more than three (3) at the first time.

'Fail:1' message window will pop up. Then you should review the course again accordingly.

Click 'Ok' to go and review the course. As shown below.



You can find some of the icons become into blue, click and review these courses again.

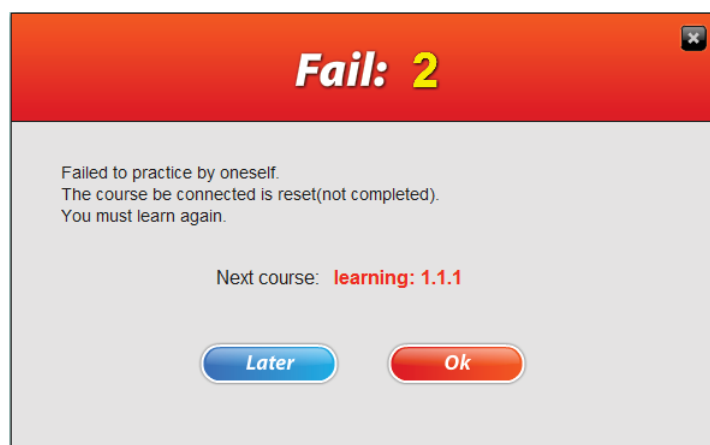




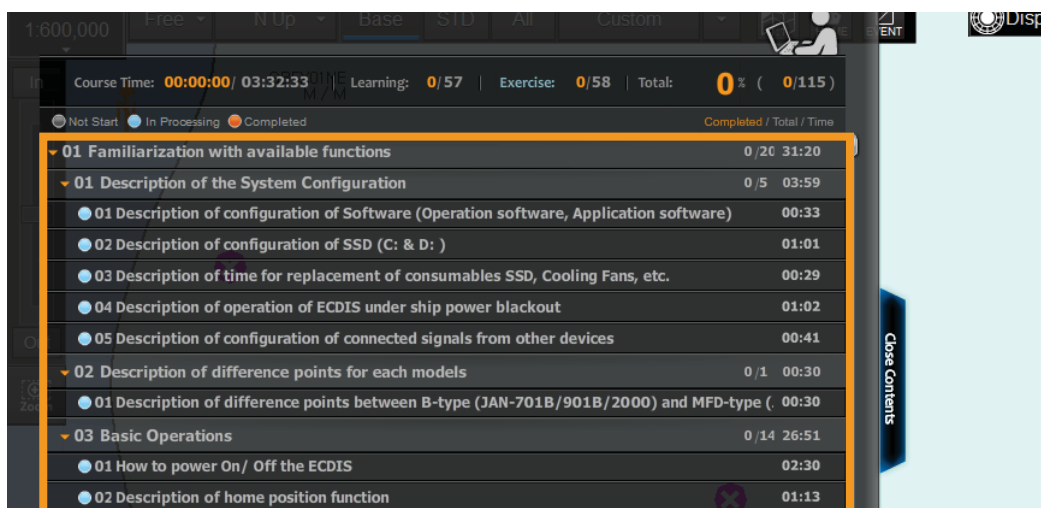
Review and reassess of 'Practice by oneself' -2

After review, the mistake you made exceeds three(3) again. 'Fail 2' message window will pop up.

You should click 'Ok' to go and review all the courses in one chart accordingly.



You can find all the icons in this chart become into blue, click and review these courses again.



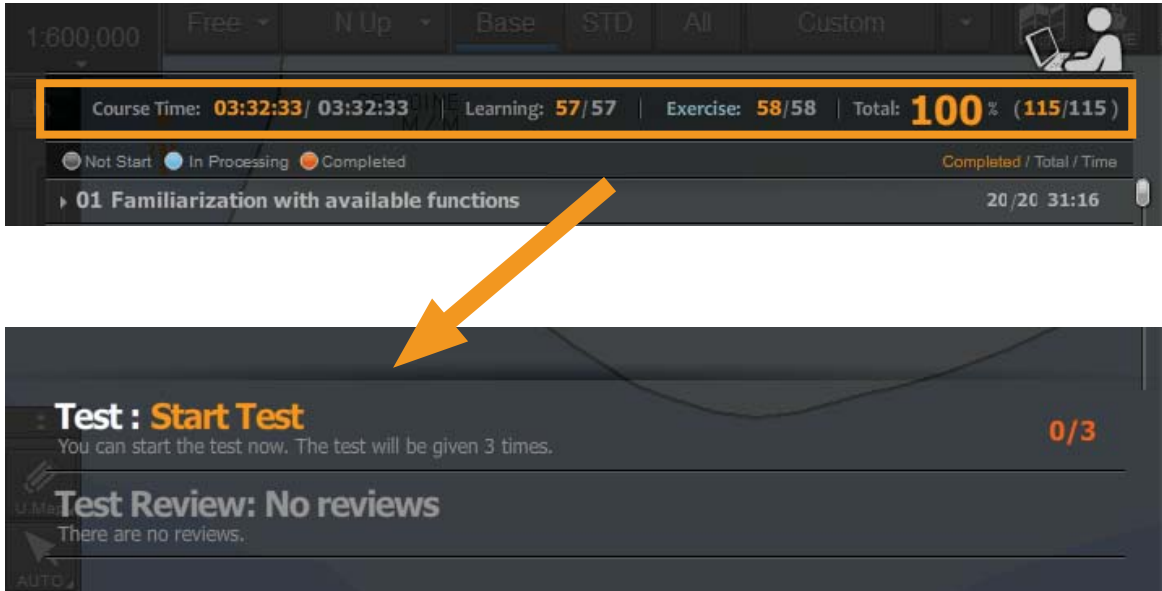
After review, if you still don't pass, 'Fail:1' and 'Fail:2' will pop up repeatedly until you succeed.

5. Test


1. Test overview
2. Start the Test
3. Test result

1. Test overview

1) Test qualification will be given when you complete all of the courses. <Figure 5-1>



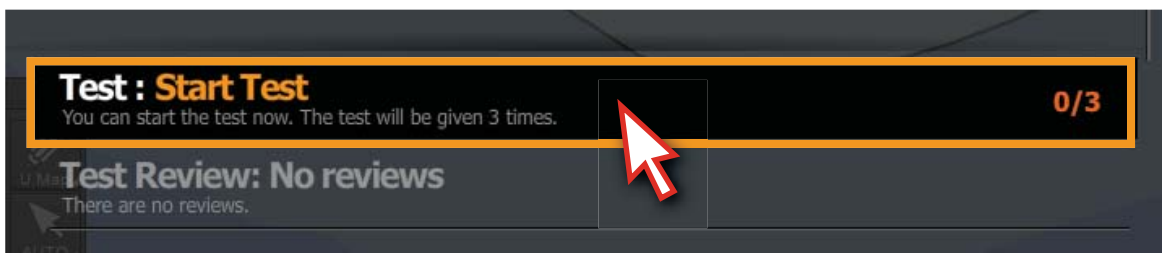
<Figure 5-1>

 **About Test**

- Quantity: 20 theoretical questions in total
- Time: 1 hour
- maximum chances: 3

Be advised that you should get more than 70(14/20) scores to pass the test.
If you failed in all three times of given test chances in a row, you may have to pay for extra fees for additional tests.

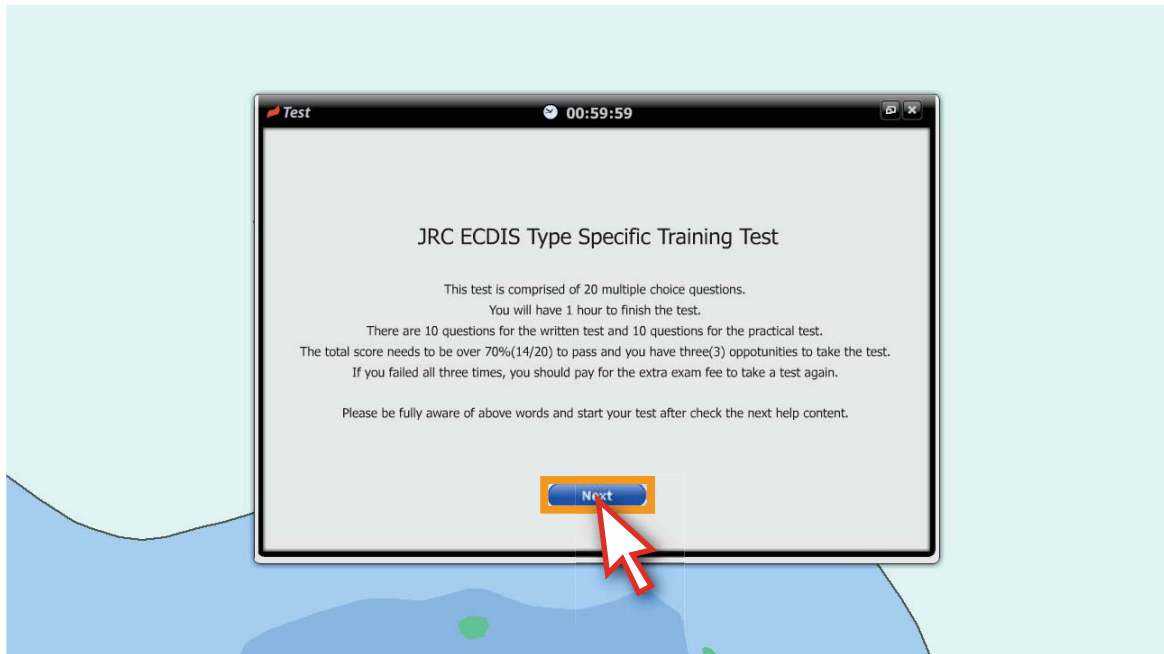
2) Click 'Start Test'. <Figure 5-2>



<Figure 5-2>

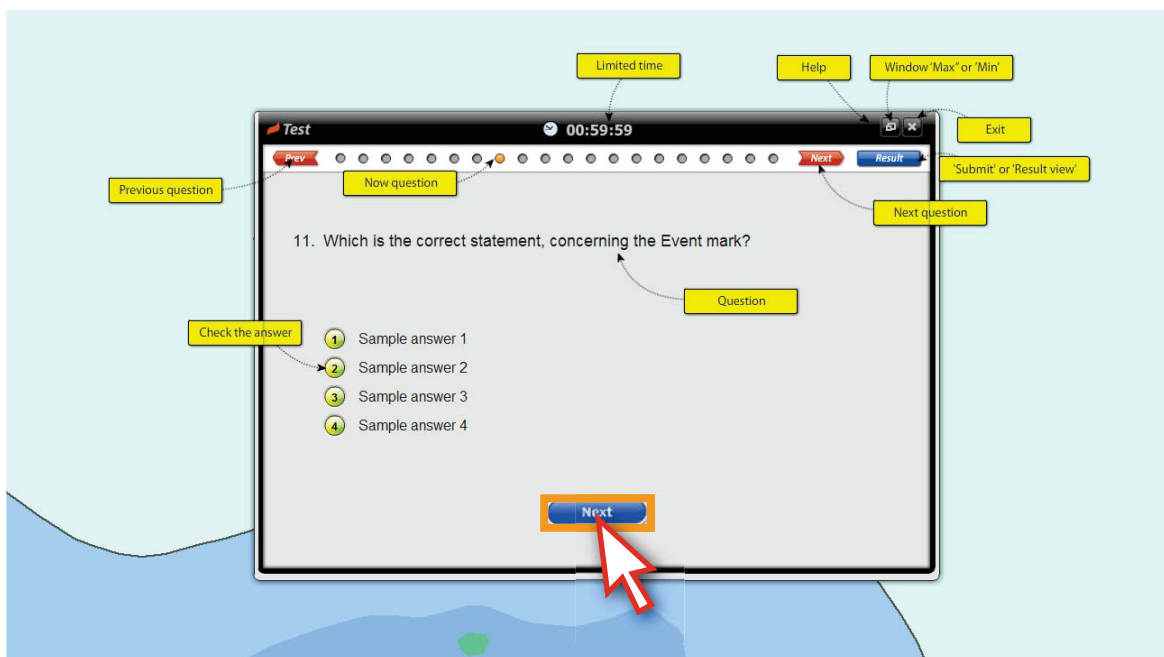
2. Start the Test

3) Read the notice and click 'Next' button. <Figure 5-3>



<Figure 5-3>

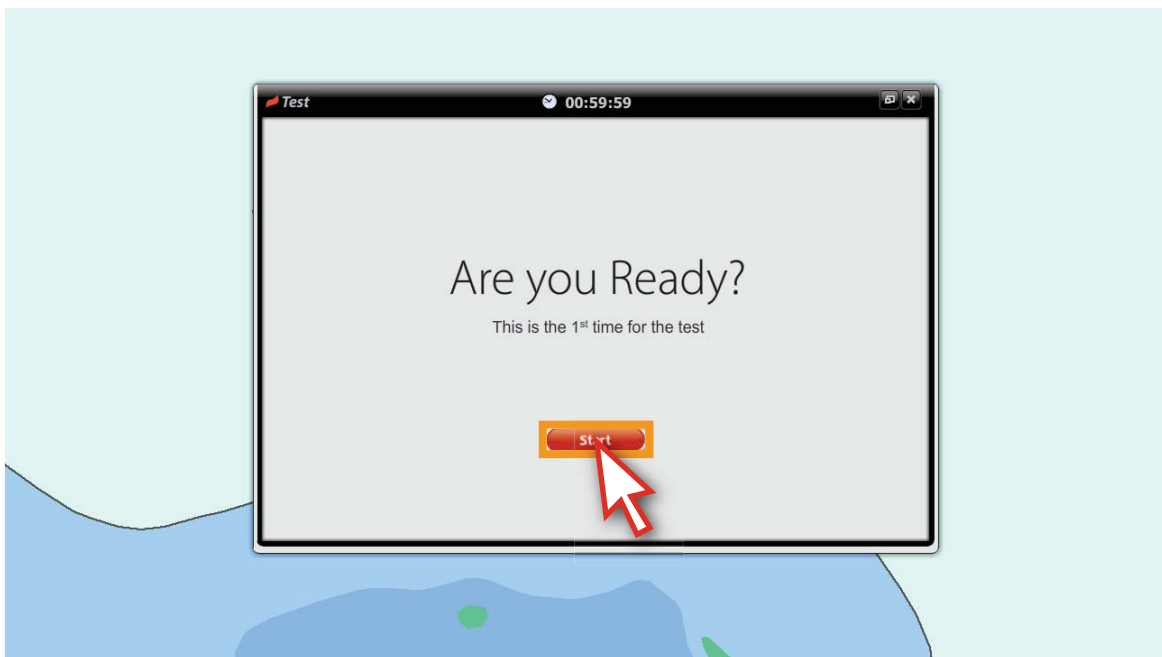
4) Details about the test will pop up, acquaint with them and click the 'text' button. <Figure 5-4>



<Figure 5-4>

5. Test

5) Click 'start' to take the test. <Figure 5-5>

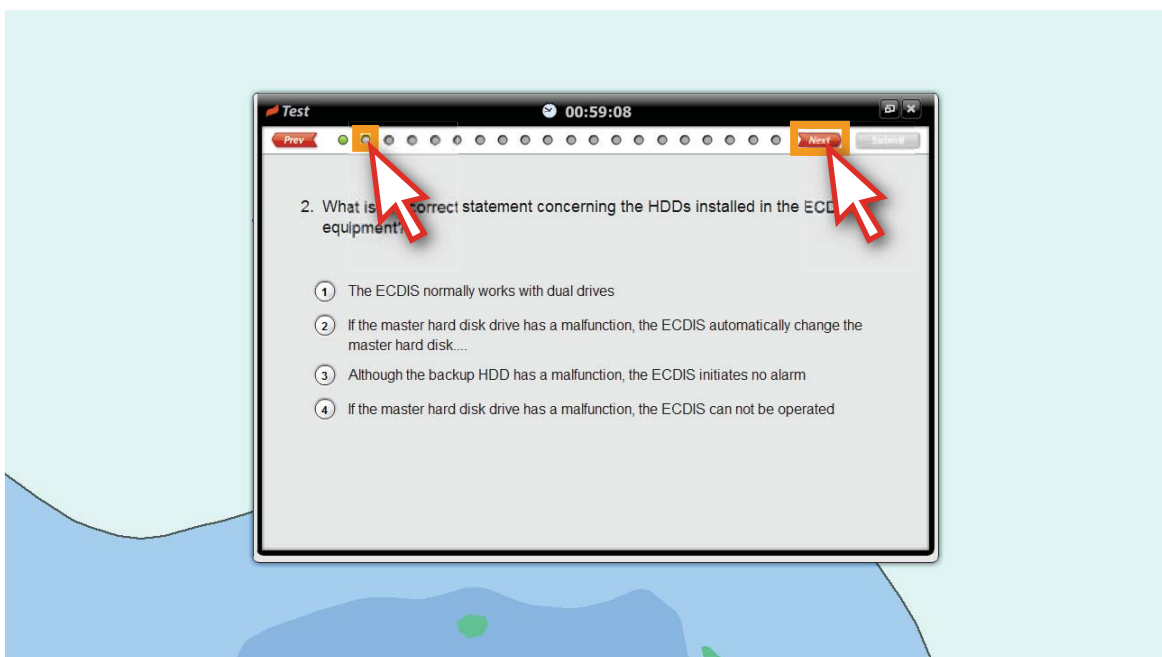


<Figure 5-5>

6) Read the question and select the answer.

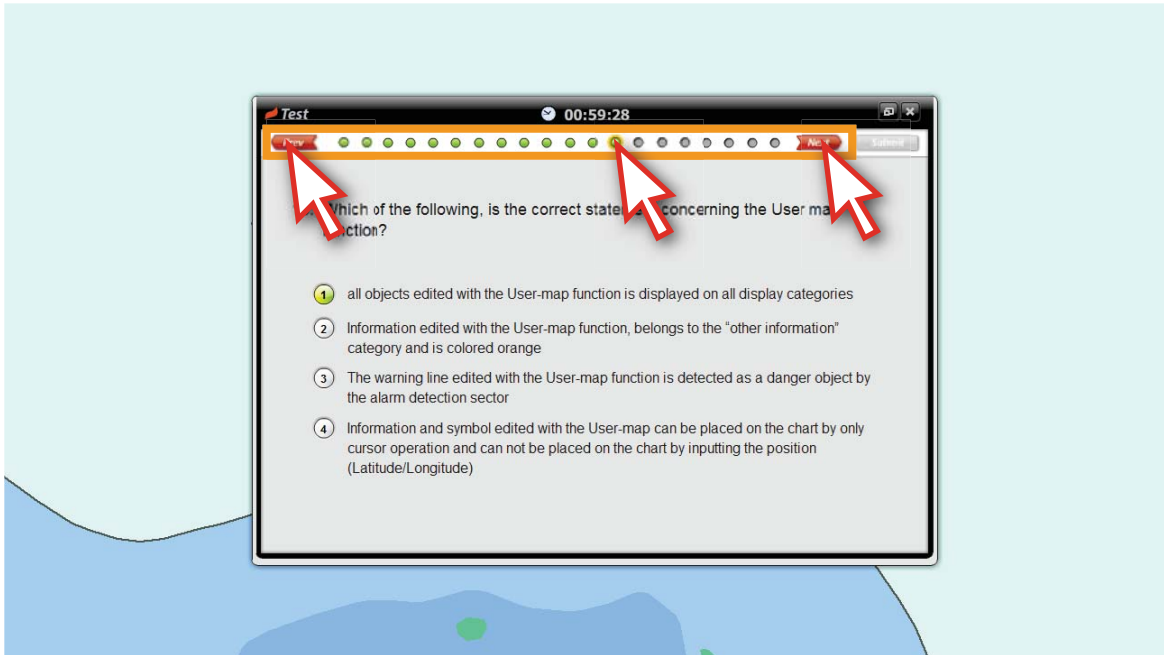
The icon of the selected answer will become into pink.

Click the round button or 'next' button to approach the next question.<Figure 5-6>



<Figure 5-6>

7) Click the questions accordingly if you want to change the answers. <Figure 5-7>

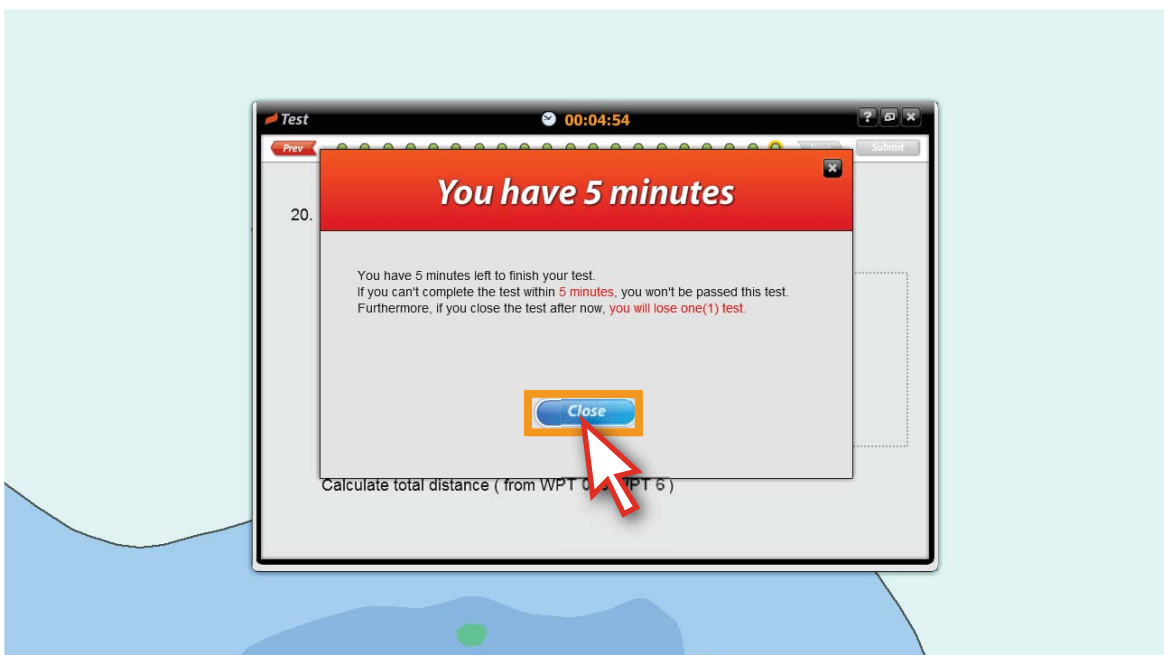


<Figure 5-7>

8) 5 minutes before the given test time, the reminder will pop up.

Be advised that you will lose one(1) of three(3) chances if you do not complete the test within 5 minutes from the time you have first seen the message. <Figure 5-8>

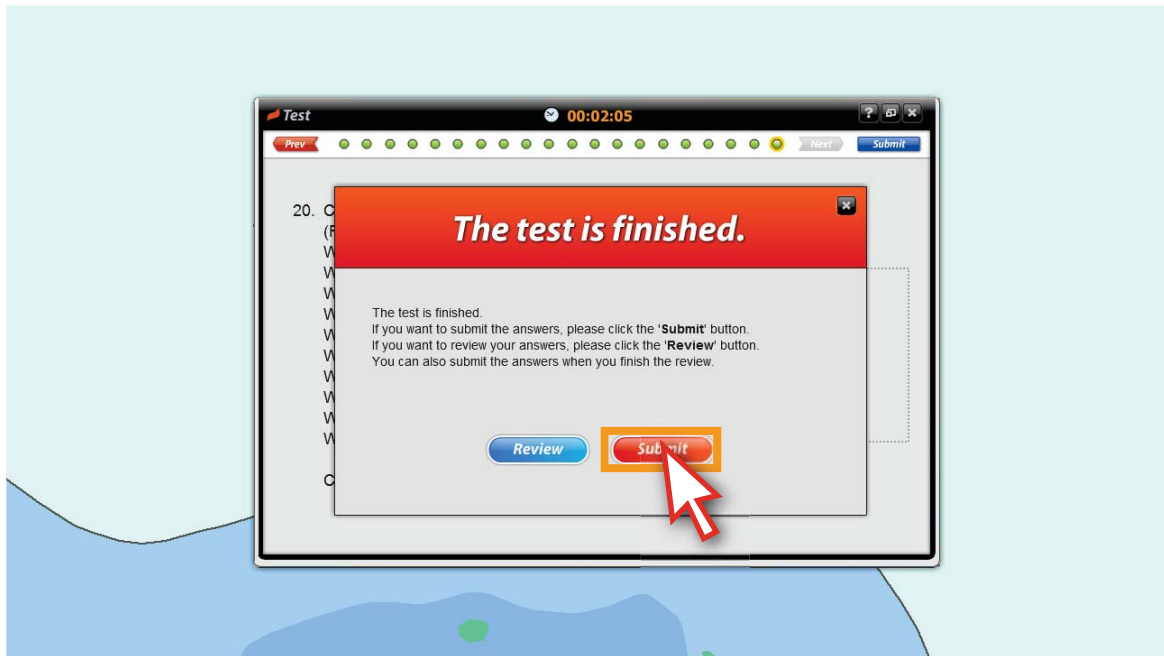
※ See details in page 46



<Figure 5-8>

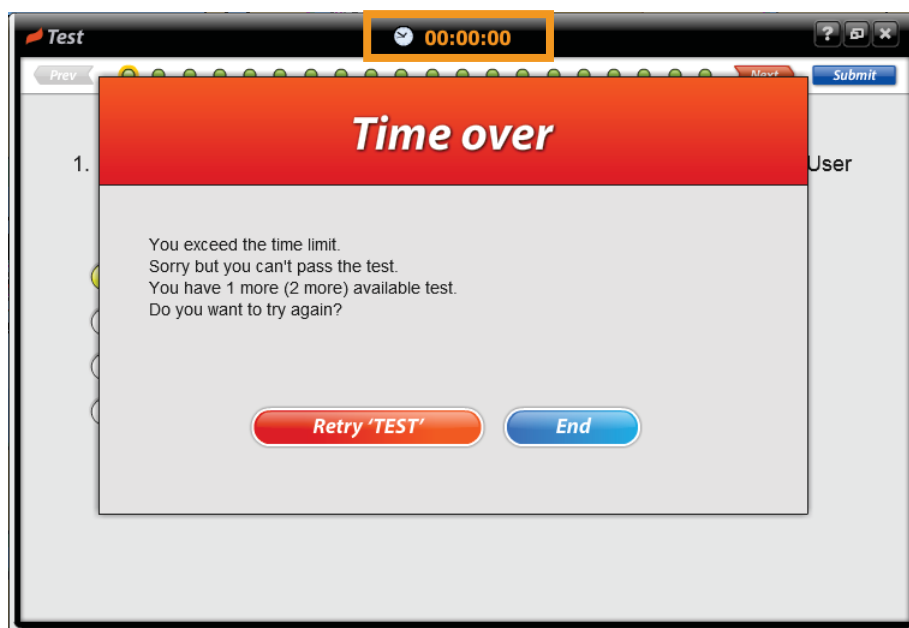
5. Test

- 9) When you finished all of the questions, 'The test is finished' window will pop up. Click 'Review' button to look over your answers, click 'Submit' button to submit your answers. <Figure 5-9>



<Figure 5-9>

If you didn't submit the answers in time, 'Time over' window will pop up. Be advised that you've failed this time. At the same time, you will lose one chance (3 times in total) of the test.

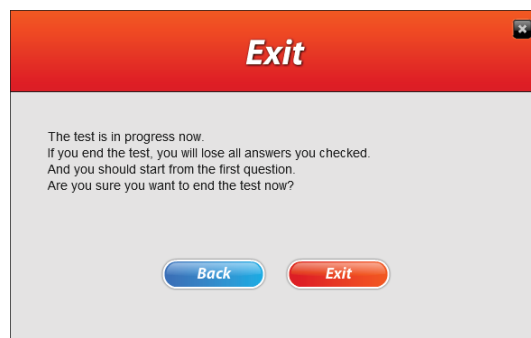




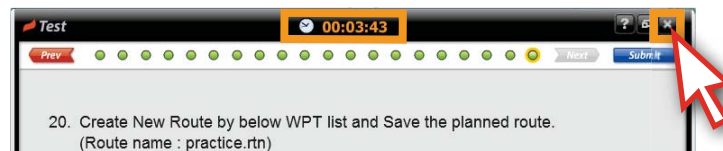
If the test is closed forcibly when test time is left more than 5 minutes.



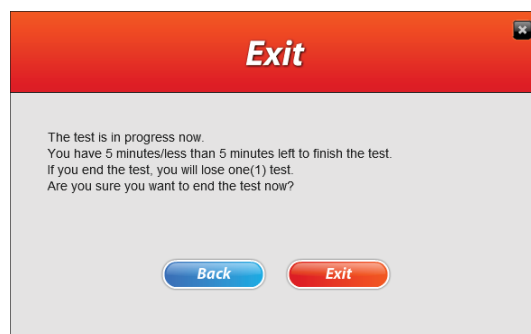
The data will not be recorded, you can take the test one time more.



If the test is closed forcibly when test time is left less than 5 minutes.

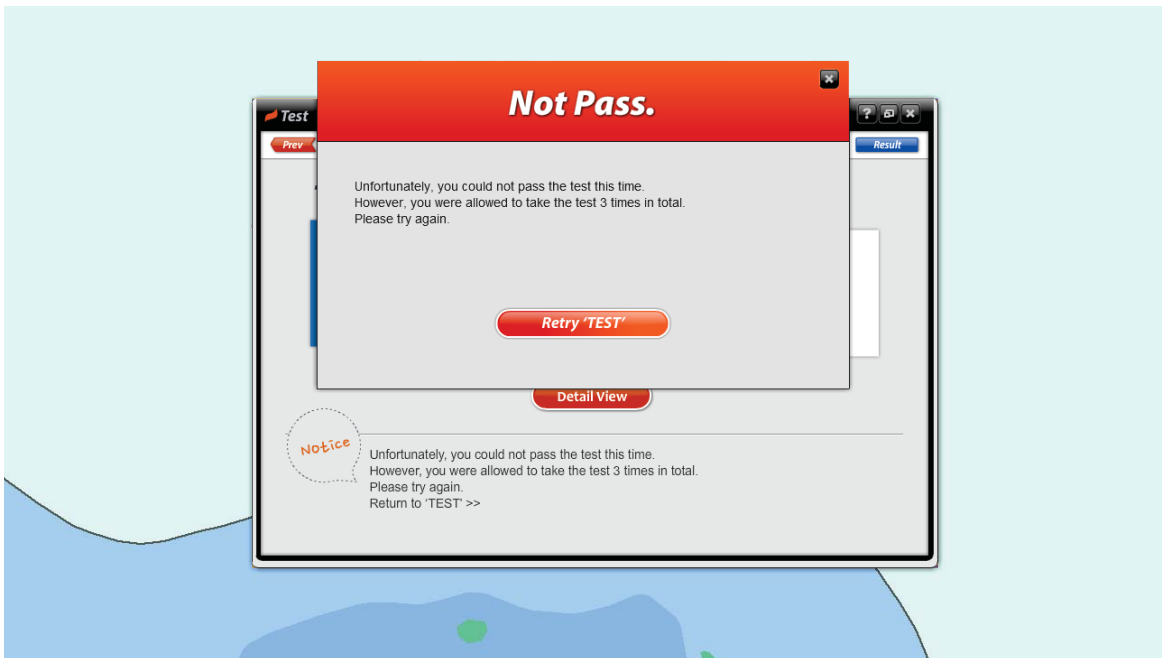


Be notice that you will lose one chance (3 times in total) of the test.



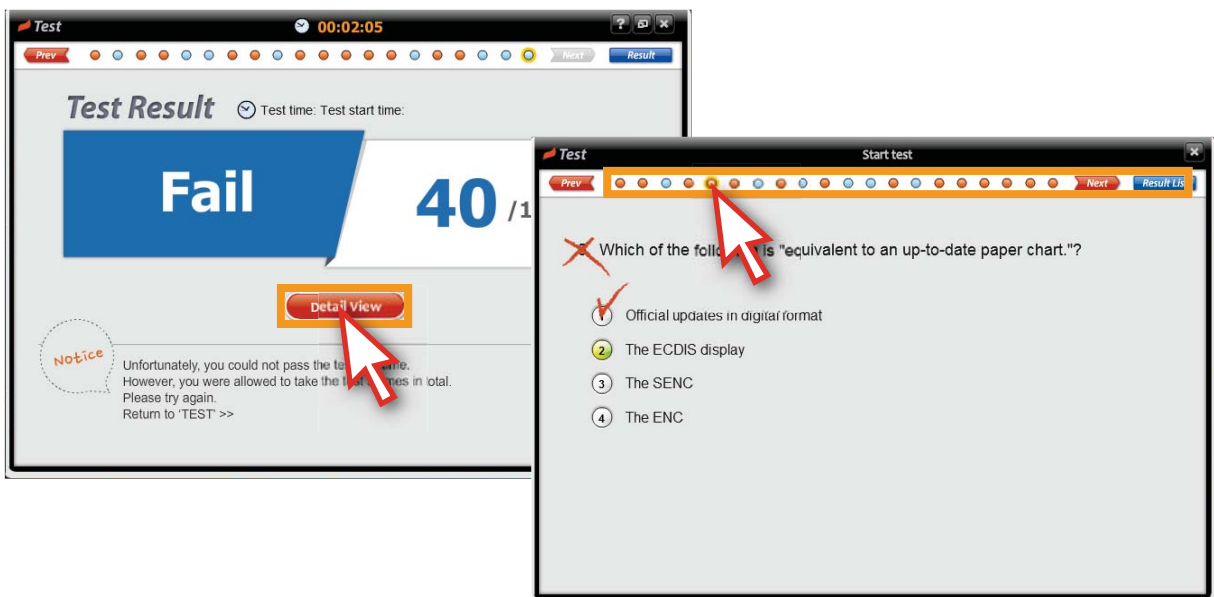
3. Test result

- 10) The test result will pop up once you click the 'Submit' button. If you didn't pass the test, click the 'Retry TEST' button to take the test one more time. Click 'X' button to close the test mode. <Figure 5-10>



<Figure 5-10>

- 11) You can check the details about the test results by clicking the 'Detail View' button. <Figure 5-11>

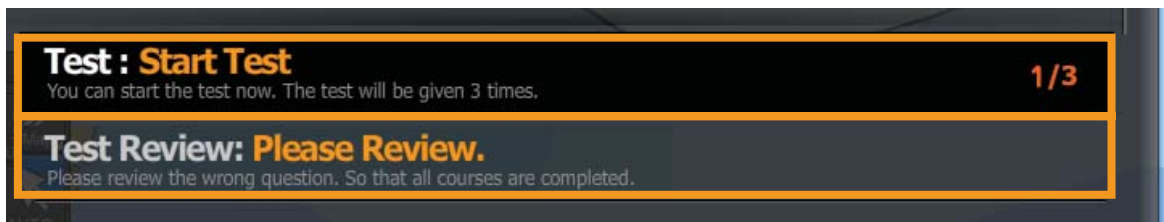


<Figure 5-11>

5. Test

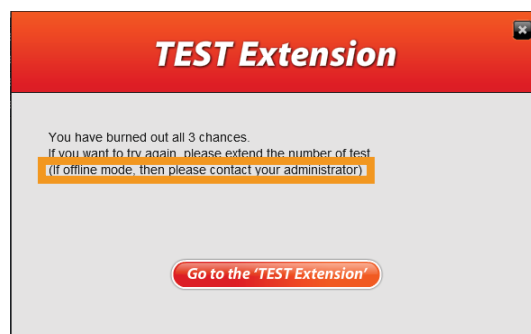
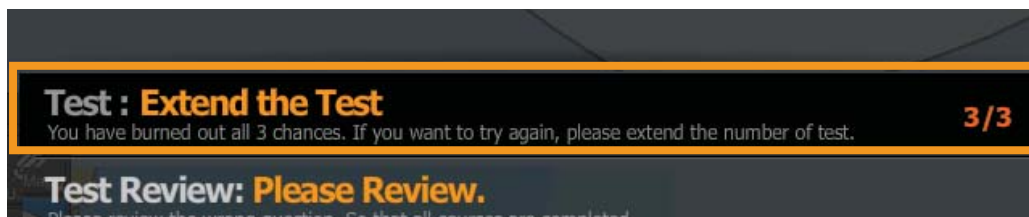
12) You can also check the 'Test Review' via contents panel.

Click the 'Start Test' bar to take the test again. <Figure 5-12>



<Figure 5-12>

If you failed in all 3 times of given test chances, please contact your administrator or program provider to extend your test chances.



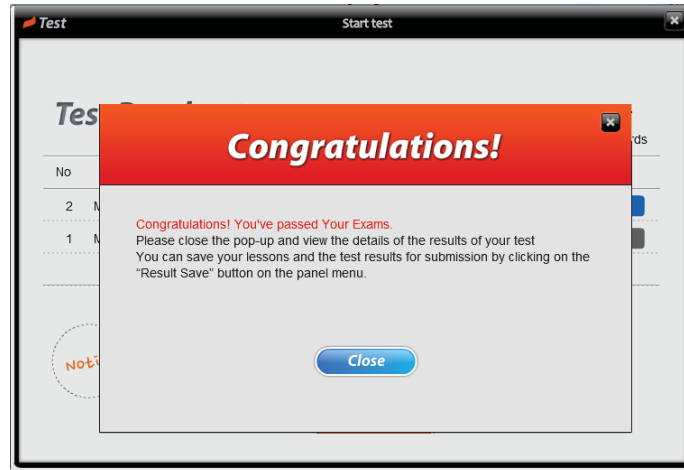
6. Test review

1. Test review

6. Test review

1. Test review

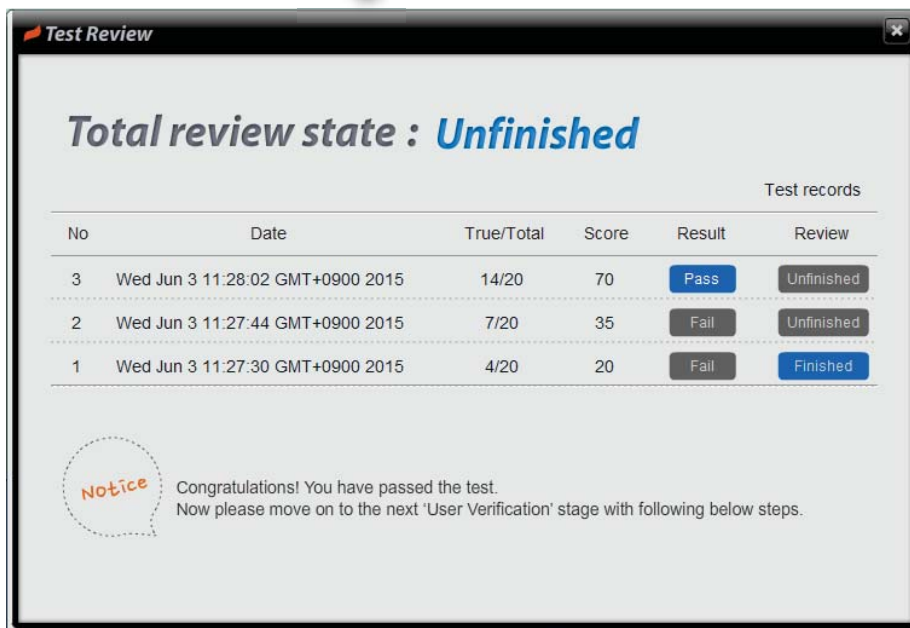
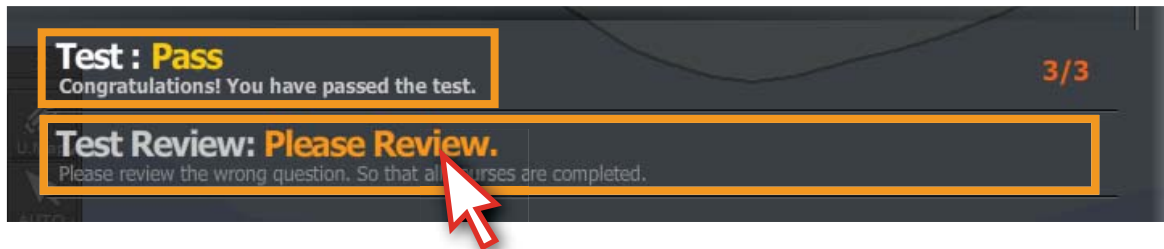
1) The 'Congratulations' window will pop up if you've passed the test. <Figure 6-1>



<Figure 6-1>

2) Click 'Test Review' button, the 'Test Review' window will pop up.

You must take the 'Test Review' step after taking the test. <Figure 6-2>



<Figure 6-2>

6. Test review

3) Click the unfinished lists to complete the 'Test Review' step. <Figure 6-3>

Total review state : Unfinished

No	Date	True/Total	Score	Result	Review
3	Wed Jun 3 11:28:02 GMT+0900 2015	14/20	70	Pass	Unfinished
2	Wed Jun 3 11:27:44 GMT+0900 2015	7/20	35	Fail	Unfinished
1	Wed Jun 3 11:27:30 GMT+0900 2015	4/20	20	Fail	Finished

Notice Congratulations! You have passed the test.

Which is correct alternative, concerning AIO displayed with the following setup?

- 1 the AIO information is displayed with the following setup.
- 2 the AIO information is displayed with the following setup.
- 3 the AIO information is displayed with the following setup.
- 4 the AIO information is displayed with the following setup.

Explanation: Question 14

Note The AIO information is displayed in all of display mode, ("Base"/"STD"/"All"/"Custom").

category of information displayed is selectable

View-Options

- Own Ship
- Own Track
- Route
- Use Map
- Master's MarkLine
- Target
- Target Track
- Chart Common
- Chart View
- AIO
 - All AIO Objects
 - Temporary Notice(T)
 - Preliminary Notice(P)
 - ENC Preliminary Notice(EP)
 - No Information Objects
- Tools
- Unit
- Control

Total review state : Finished

No	Date	True/Total	Score	Result	Review
3	Wed Jun 3 11:28:02 GMT+0900 2015	14/20	70	Pass	Finished
2	Wed Jun 3 11:27:44 GMT+0900 2015	7/20	35	Fail	Finished
1	Wed Jun 3 11:27:30 GMT+0900 2015	4/20	20	Fail	Finished

<Figure 6-3>

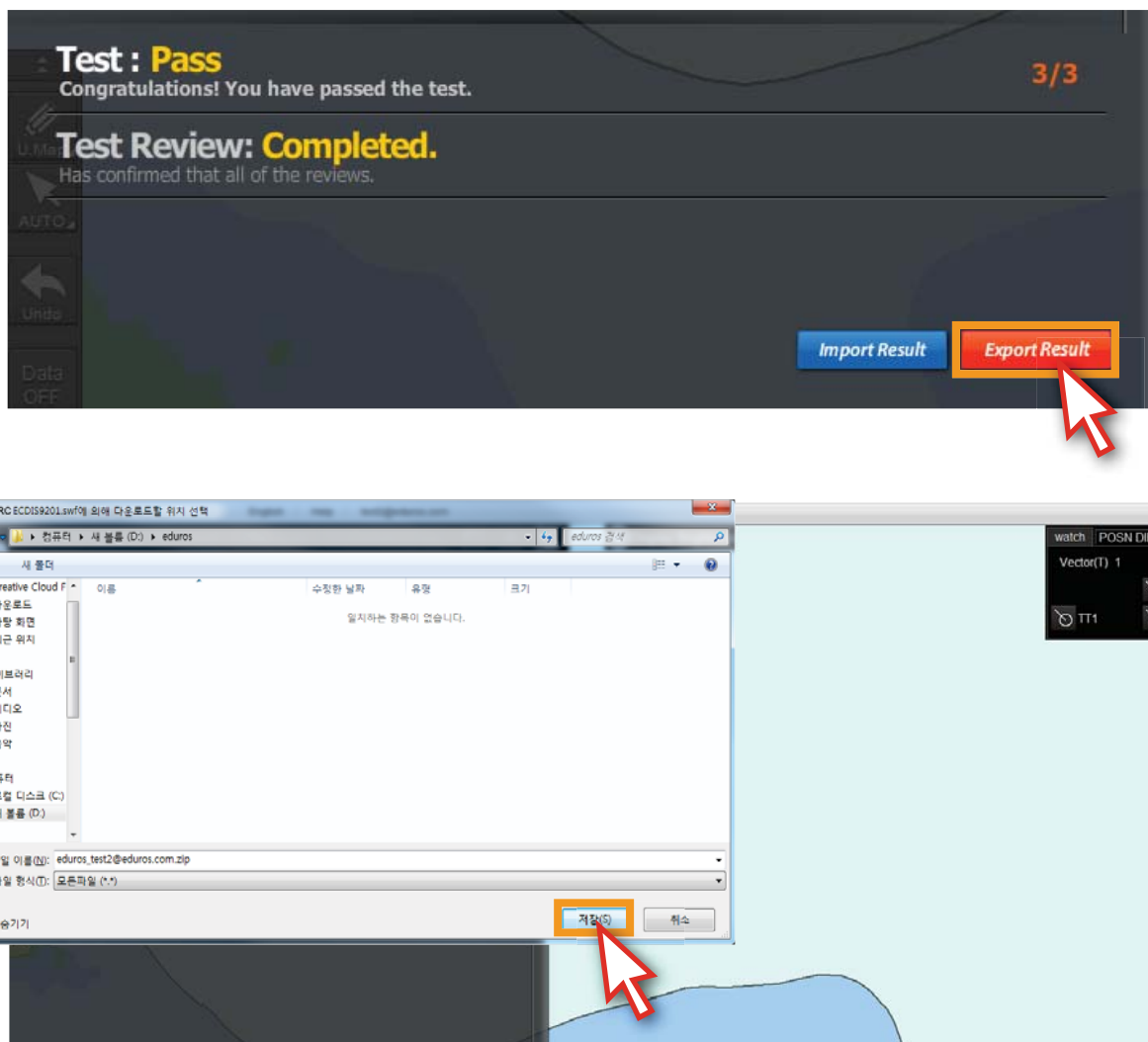
7. Save the result file

1. Save the test result file

7. Save the result file

1. Save the test result file

1) Click the 'Export Result' button to save the test result after 'Test Review' step. <Figure 7-1>



<Figure 7-1>

8. Tips

1. Description of Online mode and Offline mode
2. About the Key File
3. Program update
4. Learning records synchronization
5. Explanation of Terms

8.1 Description of Online mode and Offline mode

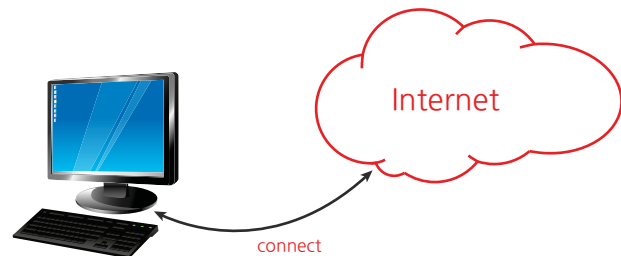


Description of Online mode and Offline mode

Online Mode

is a **synchronous learning mode** in which The CBT involves coursework delivered via web . In such cases, The learners ideally complete the course at their own pace by **using the internet** as a support tool for Sync.

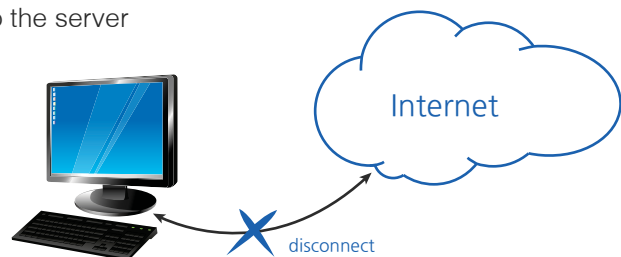
- Program Delivery : Download
- Log in : Log in after sign up
- Course Recording and Monitoring : Available anytime with Synchronization function
- System Update : Auto



Offline Mode

is an **asynchronous learning mode** that can be delivered in the DISC media or USB. This approach combines self-study and finish the course with asynchronous interactions to the server at the following key events

- Program Delivery : DISC media or USB
- Log in : A Key file can be used
- Course Recording and Monitoring : Available only in online mode after uploading the learning results into the server
- System Update : Manual



8.2 About the Key File

About the 'User Key File'

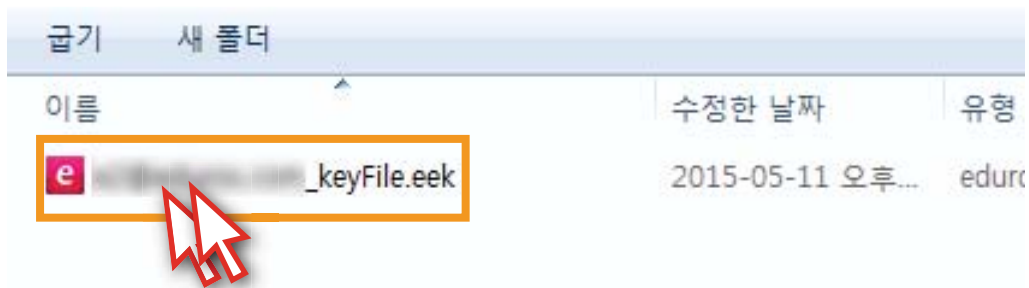
Encrypted personal ID and PW.

The Key File is automatically sent to the user or can be downloaded in the site after he/she has signed up and finished the payment or

The group manager can release and distribute the key file to any of the group member.



Double click 'User Key File', the user will be registered into the program automatically.



More than one User Key File can be registered in one program.
Users can login with his or her own ID.



SIGN IN online Offline

Please enter your User ID and Password.

User ID:

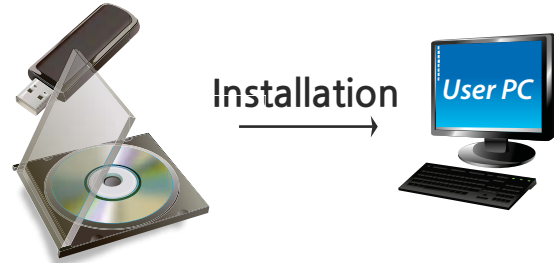
Password:

Remember me

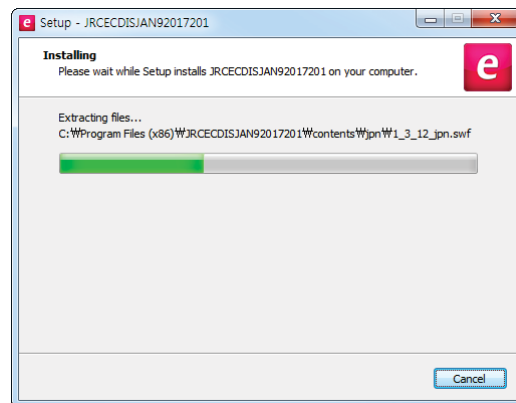
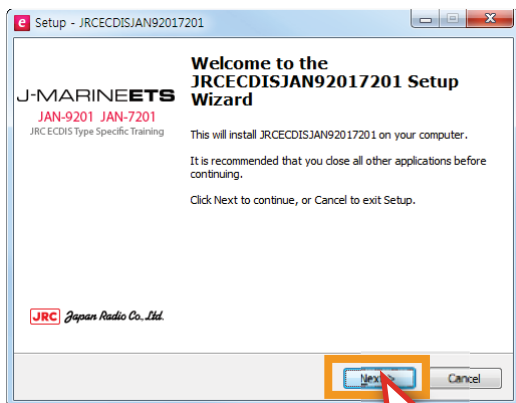
8.3 Program update

Program update

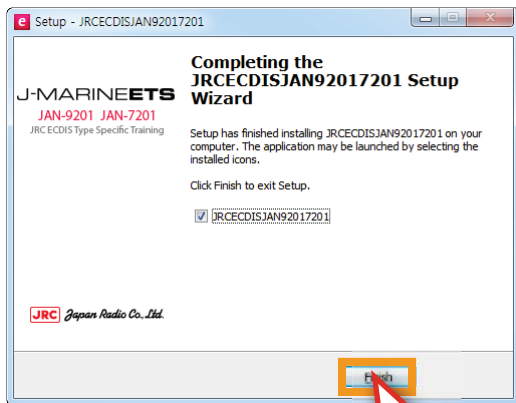
Offline mode cannot be updated via the training server automatically, so you should install software by using an DISC media or a CD.



Reinstall the updated program.



Restart the program after the installation.

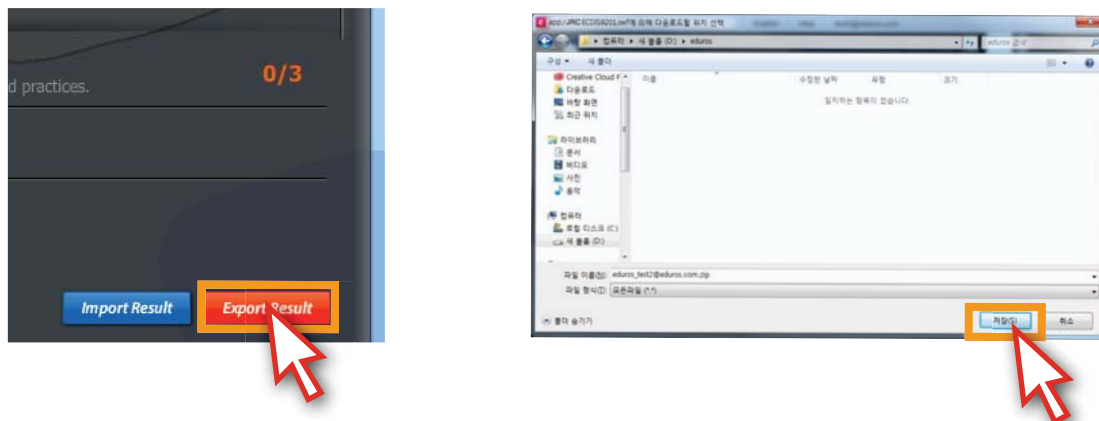


8.4 Learning records synchronization

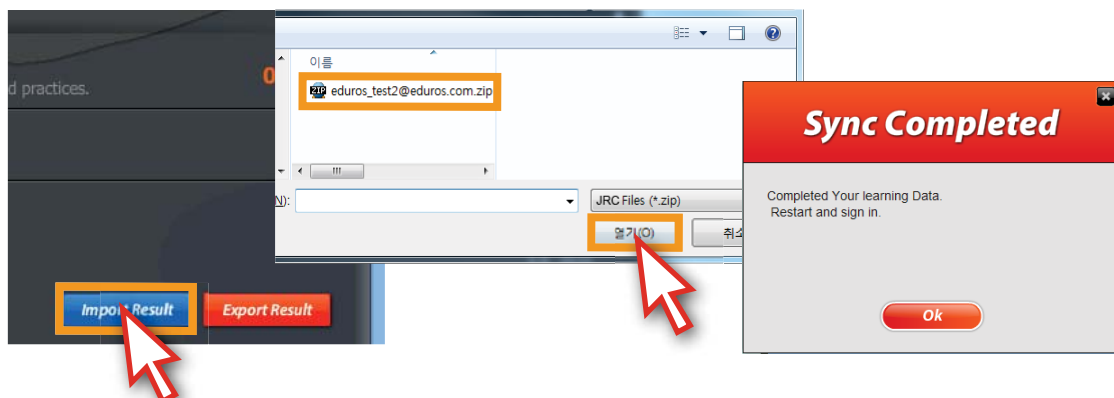
Learning records synchronization



1. Click the 'Export Result' button on the lower right corner, then save the learning records to USB or other external storages.



2. Install and run the training program on the current PC(A), then login, Click the 'Import Result' button on the lower right corner of the contents panel to import the saved learning records. The users' learning records will be synchronized to a new PC(B).



Explanation of Terms

Certificate

After finishing user verification process, the certificate will be issued under the name of training company.

Course Menu

It is on the left of the screen, including all of the courses and the test part.

DetailView

Check the answers again.

Exercise Course

You can review the courses once more after practice.

Expiration Period

The number of valid days.

Export Result

Export the users' learning records to the training program.

Guarantee Letter

It's an official document issued by an authorized trainer or the company's representative assuring that the user who apply for the verification is the person who complete the course and pass the test.

Import Result

Import the users' learning records to the training program.

Interview

There are two types of interviews "online Video and Offline face to face interview".

ISM code

International Safety Management Code

Learning Course

Individual study by means of animation showing.

Offline Mode

Disconnect to the Internet, computer based training, learn the course and save the results in local computer.

Online Mode

Connect to the Internet, Learn and track records on line.

Operation panel

The keyboard of ECDIS.

Practice by oneself

In exercise part, you can learn the course step by step as instruction firstly, then learn alone freely.

Program menu

Such functions as Language selection, Updates, Sync log, Import Result, Export Result, Sign Out, term of validity and Help are included.

Review

Look over your answers again.

Step by step

Learn the course orderly as instruction.

Submit

Submit your answers.

Support Center

Go to the Q&A board of the training website by clicking this button.

Sync log

Synchronize the learning record by clicking the 'Sync Log' button.

Test

Test qualification will be given when you complete all of the courses.

Test pop-up window

Pop-up notice message about the test.

Test Review

Check the explanation about the questions after the test.

Type-specific training

Necessary ECDIS training which is designated by the manufacturer.

Updates...

Update the program manually.

User Verification

When you pass the test, you have to ensure the identity of yourself before the certificate issuing.